



ROYAL BOROUGH OF
**WINDSOR
MAIDENHEAD**
LONDON'S COUNTRY ESTATE



OFFICIAL 2020
VENUES DIRECTORY
WWW.WINDSOR.GOV.UK



REDEFINING BUSINESS

Just 15 minutes from Heathrow and 40 minutes from London, The Oakley Court is ideally located for meetings, conferences and events with a range of flexible spaces to cater for up to 500 people.

Hold your conference here and you'll impress, captivate and inspire your delegates. Stunning riverside grounds provide the wow factor while creative food, impeccable service and extensive leisure facilities combine to create an inspirational venue.

The Oakley Court, Windsor Road
Water Oakley, Windsor, Berkshire SL45UR
Tel +44 (0)1753 609988
www.oakleycourt.co.uk



THE OAKLEY COURT
WINDSOR





Royal Borough
of Windsor &
Maidenhead



Be inspired...

...in a place that embodies the history of the nation. Where royal patronage meets a rich cultural heritage and stunning architecture enriches the glorious natural scenery.

Contents

2 *The Right Choice*

You've made it! The Royal Borough of Windsor & Maidenhead.

3 *Motivate, Reward, Entertain*

Our guide to the best incentives, team building and corporate hospitality.

4 *48hrs in Windsor*

It doesn't matter how many times you visited before there's always something new to see or experience.

6 *Green without Compromise*

7 *A More Positive & Productive You*

8 *As we Live & Breathe*

We know this destination inside and out. We're here to help.

9 *Our Venues*

A selection of the best, most interesting and versatile locations for your next meeting or event.

42 *Our Suppliers*

For help with everything from catering to event management and guiding services to rail transport.

47 *Getting here & Getting Around*

By road, by rail, by air.

50 *Map*

Because you need to find your way around.



The Right Choice

YOU'VE MADE IT!

The Royal Borough of Windsor & Maidenhead.

LONDON'S COUNTRY ESTATE

You can't say the word Windsor without conjuring up images of the world's oldest and largest inhabited castle, the country's longest-reigning monarch, world-class international events and stunning natural scenery.

The region thrives on its royal patronage, rich cultural heritage and an array of British icons. Add to this a wealth of attractions combined with superb shopping and a range of high quality restaurants and you have the complete package when it comes to placing your next meeting or event.



Motivate, Reward, Entertain

CORPORATE HOSPITALITY, TEAM BUILDING AND INCENTIVE TRAVEL

Events

From Royal Ascot, the centrepiece of the British social calendar, to Windsor Festival, one of the premier music and arts festivals in the UK, events in this destination reflect its very special position as a royal borough.



Experience

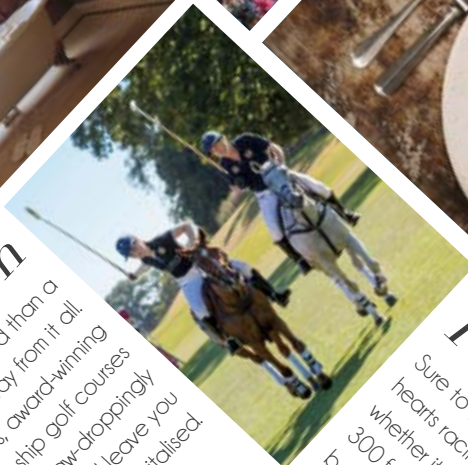
The magic of this iconic location is brought to life on a private evening tour of the magnificent Windsor Castle while guided walking tours, with one of our expert guides, bring 1,000 years of history to life. In the towns and villages surrounding Windsor discover a landscape that inspired artists, authors, adventurers, poets and politicians.



Royal Collection Trust / © Her Majesty Queen Elizabeth 2017
Photographer: Matt Fieness

Relaxation

There's no better reward than a luxurious break away from it all. Stunning spa hotels, award-winning restaurants, championship golf courses and acre after acre of jaw-droppingly beautiful countryside will leave you feeling renewed and revitalised.



Participation

Sure to get the adrenalin pumping and hearts racing, rise to a new challenge whether it be a bungee jump from 300 feet, the spectacular fun of dragon boat racing or the exhilaration of mastering Windsor's Escape Experience.

Learning

Whether learning to fly at one of the oldest and best-known airfields in the country, enjoying the challenge of polo – the world's oldest, most graceful and exhilarating sport – or taking a culinary masterclass with one of the finest chefs in the country, there's so much to experience.



Windsor Castle
Royal Collection Trust / © Her Majesty Queen Elizabeth II 2020

48hrs *in Windsor*

Merely a hop, skip and a jump from London, a stone's throw from Heathrow Airport but a world away from the city, Windsor is a place of beauty where you can enjoy the very best of English culture, feel a sense of history and free your mind.

Day One

With almost 1,000 years of history to discover, 13 acres (5 hectares) of buildings including the magnificent State Apartments, Queen Mary's Dolls' House and St George's Chapel you need at least two hours at Windsor Castle. It doesn't matter how many times you visited before there's always something new to see or experience. From Conquer the Tower to summer band concerts and visits to the Moat Garden this iconic attraction has to be top of your must-visit list.

Time your visit so that you can catch the changing of the guard ceremony that takes place in Lower Ward. This is the only place outside London where you can see this colourful display whilst listening to the military band.

Relax after lunch on a gentle cruise along the River Thames as it meanders past famous sites such as Eton College Chapel and Royal Windsor Racecourse or take in the spectacular views of Windsor Castle from the Long Walk during a horse-drawn carriage ride.

Take a stroll over the bridge to the opposite bank of the Thames into Eton with its world-famous school. Eton is an eclectic mix of traditional and contemporary retail bringing together antiques and modern art, traditional medicines and complementary beauty therapies, English roast dinners and exquisite European cuisine. The mile-long high street leading down to Eton College gives you a sense of stepping back in time when you see the boys in their traditional school dress.

After hours you'll find great entertainment at Windsor's Theatre Royal or one of two fantastic arts centres in the borough - Norden Farm in Maidenhead and The Old Court in Windsor.

For the ultimate dining experience head to the culinary mother ship at Bray where Michelin stars abound but if you prefer to stay in Windsor you'll find a fine array of eating places and watering holes.



Day Two

Learn more about this charming town and its history by taking a guided tour with a local expert. Nobody knows it quite like Windsor Tourist Guides do.

For a fun way to experience Windsor & Eton head to the Duck Stop outside the Theatre Royal to catch the Duck tour, an amphibious vehicle that takes you on a circular tour of the town on road and water. If you prefer something more active test your skills at the brand-new, interactive and immersive Escape Rooms in Windsor. Find clues, solve puzzles and crack codes to locate the key for your escape! You have 60 minutes on the clock... will you make it out?

Windsor Great Park is the perfect place to unwind and enjoy the natural environment, offering horse riding, mountain biking, kite flying, picnicking, walks and more. The glorious Savill Garden bursting with colour all year round, and plenty of fresh air will help clear your mind and refresh your soul.

Green without Compromise

WHEN SUSTAINABILITY FEATURES HIGH ON YOUR LOCATION CRITERIA LIST YOU DON'T HAVE TO SACRIFICE GLAMOUR FOR CONVENIENCE OR PRESTIGE FOR PRACTICALITY.

London's Country Estate, with Windsor at its heart, extends over vast landscapes of well-kept grounds and beautiful countryside including over 1,000 acres of National Trust land in the north and 4,800 acres of Crown Estate. It features large country hotel estates and private islands in the River Thames accessible only by boat. Her Majesty Queen Elizabeth II chooses to spend her free weekends here in the world's oldest occupied castle. There are spectacular venues chosen by Royal couples from Princes and Princesses to Dukes and Duchesses, high profile social events and a galaxy of Michelin stars for fine dining options.

Windsor is close to Heathrow airport, and well served by public transport, including two railway lines facilitating short journey times of less than an hour by public transport to the capital. There are locally brewed craft beers, several gin distillers and dining establishments striving to source and serve local ingredients. Many hotel estates grow their own herbs and vegetables, support wildlife, keep beehives and support a quiet revolution with refillable toiletries, solar panel heating, plastic and food waste reduction, composting and rainwater harvesting.

Dig deeper and you'll find hotels utilising modern technologies and adapting to meet sustainability requirements without losing their heritage and identity. Great Fosters recently switched to 100% renewable electricity supply, mainly derived from offshore wind-power farms. Produce grown or foraged from the grounds and used in preparation of seasonal dishes in the Oak Room includes apples, wild plums, mulberries and blackberries.



The Monkey Island Estate kitchen garden features home grown herbs and pickling vegetables and the island supports four beehives, a smokehouse and six chickens, all named after famous ladies on the estate. The Oakley Court's comprehensive green events policy includes reusable water bottles, glass writing boards, pencils and conference pads made from recycled paper, outdoor break-out spaces, lunches of locally sourced produce and seasonal home grown salads. The onsite water dispenser provides chilled still and sparkling water in reusable glass bottles, a system up to 40% more efficient than other systems. Outdoors there is complimentary bike hire to explore the local area and free charging for delegates with electric vehicles.

The Runnymede hotel successfully diverts 100% of waste from landfill sites and uses an Eco-Safe Digester to aerobically digest all food waste. Plastic straws and stirrers were replaced by bio-degradable paper straws and bamboo in all restaurants and bars in March 2018. Wildlife supporting measures to enhance the environment include planting new native woodland and the provision of electric boats.

There's an underground energy centre at Coworth Park, which is the UK's only hotel to grow its own fuel by cultivating willow on the estate for use in the biomass heating plant. The Spa is predominantly built from timber structures with a Living Roof of plants and herbs and the magnificent 10-acre wildflower meadow is one of the hotel's dominant external features.



A More Positive & Productive You

With fast paced lives and growing awareness of the importance of maintaining mental health, finding a little time for self-care really is easy to absorb. Working with venues in Windsor, London's Country Estate meeting and event organisers can confidently build in healthy activities, nutritious dining and relaxation periods that balance work and wellbeing. Combined with spaces of natural light and outdoor access, everyone can let go of their demanding schedules and enjoy a stress-free event.

Unwind and Clear your Mind at DeVere Beaumont estate, where the leisure options include round-the-clock gym facilities, heated pool and yoga classes, tennis and squash courts. There are several nearby running trails or take a 10-minute walk to the Magna Carta memorials through 40 acres of beautiful parkland.

Explore the Grounds at The Oakley Court, where the 33-acre estate is covered in trails and walks. Every bedroom comes equipped with a handy lanyard map enabling delegates to take a mini trek nature trail to see the hedgehog homes and bird houses, wander around 150-year-old trees or take a photo selfie with driftwood sculptures.

Taste the difference with light bites, fine dining, plant-based and free-from menu options increasingly popular choices for delegates. The creative teams of chefs at venues like Ascot Racecourse, Stoke Park and The Compleat Angler offer carefully crafted bespoke menus to cover healthy eating and dietary choices.

Dedicated lounges and quiet areas with comfortable seating and large windows giving views across Windsor Great Park are features of historic Cumberland Lodge and are perfect spaces to take five, reflect and gather your thoughts.

A breath of fresh air is always welcome. The Old Bell, Hurley is just one of the venues where meeting spaces open up into private gardens or terraces which are perfect for lunches, pre-dinner drinks and team building activities.

Moments of calm spa treatments are perfect for mentally unwinding as more specialist treatments incorporate mindfulness. The Runnymede has introduced a Calm and Relax spa experience to complement other therapies and treatment options.

English Country Gardens offer tranquil areas of respite for delegates to enjoy. Designed by the pioneering horticulturalist, Gertrude Jekyll, Coworth Park grounds include a Romantic rose garden, Sunken garden, Croquet lawn and ten-acre wildflower meadow.

Add a fun twist. Team building sessions available at Cliveden include giving back to the community with Bike Build, a 2½ hour challenge to gain the knowledge and build a bike, or On Board, a 2-hour challenge mixing street cred, art and common sense.

Messing about on the River is the perfect backdrop for events of all sizes. There are lunch, afternoon tea and dinner cruises available on Bateaux Windsor's The Willow Room operating from Windsor, and French Brothers passenger boats operating from Runnymede, Windsor and Maidenhead.



As we live & breathe...



The team here at the Royal Borough of Windsor & Maidenhead have over 60 years of knowledge and experience between them. We live and work here. We love it and we want you to love it too!

As local experts we're here to help with finding your venue, booking your accommodation, planning your itinerary and sourcing those special ingredients that make your particular meeting or event a truly memorable one.

SERVICES WE OFFER:

- Venue finding and contracting
- Accommodation booking
- Group and individual bookings for attractions and events
- Inspiration and contacts for team building activities, major events and outdoor pursuits
- Itinerary planning for social, cultural and partner programmes
- Connecting you with our local network of suppliers
- Expert advice on travel to the area
- Delegate literature
- Imagery and promotional content for your own event marketing

GET IN TOUCH:

For information, venue finding service or simply for some inspiration and advice.

Call: 01753 743907 or 01753 743900

Email: Windsor.accommodation@rbwm.gov.uk

Visit: Windsor.gov.uk

 @WindsorMice

 Royal Borough of Windsor & Maidenhead MICE

Members of  www.msetbeyondlondon.com



We also work in partnership with Goldcrest Events Ltd to offer a full range of event-related services:

Venue finding using experts whose backgrounds are in event management, hotels, catering, conference organisers and business travel agencies.

Consultancy services offering a range of skills to clients looking for short or medium-term solutions to a shortage of resources or for extra help during peaks in demand.

Event theming service providing venue decoration and room dressing services to clients who wish to transform traditional event space into something more spectacular.

GET IN TOUCH:














Call: +44 (0) 7842 510 52

Featured Venues

| Venue | Max Theatre Capacity | Bedrooms | Page | Map Grid Ref |
|---|----------------------|----------|------|--------------|
| Ascot Racecourse | 1280 | - | 10 | H6 |
| The Boatman | - | - | 11 | H4 |
| Castle Hotel, Windsor - MGallery Hotel Collection | 400 | 108 | 12 | H4 |
| Cliveden House | 60 | 47 | 13 | G2 |
| Coworth Park | 100 | 70 | 14 | I6 |
| Cumberland Lodge | 120 | 58 | 15 | I5 |
| De Vere Beaumont Estate | 700 | 429 | 16 | J5 |
| Eton College Dorney Lake | 200 | - | 17 | G3 |
| Eton College Queen's Eyot | 60 | - | 18 | G3 |
| Fairmont Windsor Park | 700 | 200+ | 19 | I6 |
| French Brothers Boats | 68 | - | 20 | I4 |
| The Great Fosters Estate | 48 | 55 | 21 | I6 |
| Guards Polo Club | - | - | 22 | H6 |
| Heathrow Windsor Marriott Hotel | 300 | 382 | 23 | K4 |
| Hilton London Heathrow Airport T5 | 1500 | 350 | 24 | K4 |
| The Langley | 80 | 41 | 25 | I3 |
| Macdonald Compleat Angler | 120 | 64 | 26 | F1 |
| Macdonald Windsor Hotel | 140 | 120 | 27 | I4 |
| Monkey Island Estate | 100 | 41 | 28 | G3 |
| Norden Farm Centre for the Arts | 238 | - | 29 | F3 |
| The Oakley Court | 120 | 118 | 30 | H4 |
| The Olde Bell | 150 | 48 | 31 | E2 |
| The Royal Adelaide Hotel | 100 | 43 | 32 | I4 |
| Royal Berkshire | 160 | 66 | 33 | H6 |
| The Royal Windsor | 30 | - | 34 | I4 |
| Royal Windsor Racecourse | 348 | - | 35 | H4 |
| The Runnymede on Thames | 350 | 180 | 36 | J5 |
| Sir Christopher Wren Hotel & Spa | 90 | 139 | 37 | I4 |
| Stoke Park Country Club | 70 | 49 | 38 | H3 |
| Venue Henley Greenlands Hotel | 115 | 100 | 39 | C2 |
| Willow Room by Bateaux London | - | - | 40 | I4 |
| The Windsor Guildhall | 100 | - | 41 | I4 |

| Suppliers | Page |
|-------------------------------|------------|
| Ascot Racecourse | Back Cover |
| Escape Experience Windsor | 42 |
| Goldcrest Events Ltd | 43 |
| Guards Polo Club | 44 |
| Great Western Railway | 46 |
| Ice - Brand Experience Agency | 44 |
| Private Boat Hire | 45 |
| Windsor Carriages | 53 |
| Windsor Castle | 52 |
| Windsor Tourist Guides Ltd | 45 |

KEY TO SYMBOLS

| | | | | | |
|---|---|--|---|---|--|
|  Leisure facilities / tennis |  Bedrooms |  Meeting room |  Restaurant |  Swimming pool indoors |  Swimming pool outdoors |
|  Horse Riding |  Gym facilities |  Spa facilities |  24hr Room Service |  Watersports | |
|  Golf |  Garden | | | | |

Ascot Racecourse



Ascot, Berkshire, SL5 7JX

T: +44(0) 344 346 3611 | E: events@ascot.co.uk

Contact: Danielle Pratchett: Events Sales Executive | Danielle.Pratchett@ascot.co.uk
 Abigail Elkins: Senior Events Sales Executive | Abigail.Elkins@ascot.co.uk

Ascot is an unrivalled business and social events venue that is truly unique with a rich heritage and history few sporting venues can match. Ascot has established itself as a national institution, with Royal Ascot as the centrepiece of the British social calendar and the ultimate stage for the best racehorses in the world. We offer clients and guests alike first-class facilities and cater for a wide range of events, from an executive meeting for 10, to an exclusive event for 8,000.

With over 300 meeting rooms, 4,000 m2 of exhibition space, private dining suites, stylish restaurants, attractive open spaces, terraces and lawns, Ascot is ideal for hosting events. The venue is easily accessible, located close to major road networks, 30 minutes from Heathrow and under an hour from London by train and has complimentary onsite parking for over 6,000 cars. Our experienced team is fully committed to providing an outstanding and memorable experience.



Meeting and Conference Facilities

| Suite/Capacity | Theatre | Classroom | Dinner | Dinner Dance | Reception | Boardroom |
|------------------------|------------|-----------|------------|--------------|------------|-----------|
| Pavilion 1* | 420 | 130 | 330 | 270 | 400 | – |
| Pavilion 2* | 720 | 220 | 600 | 580 | 1000 | – |
| Pavilion 3* | 250 | 80 | 210 | 210 | 300 | – |
| Parade Ring Suite | 370 | 90 | 270 | 190 | 400 | – |
| Panoramic Suite | 100 | – | 200 | 120 | 250 | – |
| On 5 Suite | 160 | 50 | 200 | 200 | 300 | – |
| Windsor Forest Suite | 110 | 50 | 90 | 70 | 100 | 28 |
| Concourse | – | – | 800 | – | 3000 | – |
| Ascot Authority Suite | 140 | 50 | 120 | 90 | 100 | 50 |
| Hospitality Suites | From 10-25 | – | From 12-30 | – | From 15-40 | – |
| Old Paddock Suite | 200 | 120 | 200 | 160 | 350 | – |
| Furlong Club (May-Oct) | 1280 | – | 510 | 790 | 1000 | – |

Venue Details

| | | | |
|------------------|---------------------------|-------------------------------|----------|
| Bedrooms: | Preferred hotel programme | Airport: | 16 miles |
| Parking: | 6,000 | Nearest train station: | Ascot |

*Pavilion areas can be combined; when taken as one larger venue, an Exhibition Hall holding a reception for 1000 is also available.

The Boatman



The Boatman, 10 Thames Side, Windsor, Berkshire, SL4 1QN

T: 01753 620010

E: boatmanwindsor@slhuk.com

W: www.boatmanwindsor.com

The Boatman in Windsor is directly on the River Thames overlooking Eton Bridge, and is arguably the best location in the town for soaking up the incredible waterfront views and watching the world go by. In addition to the large open Terrace, there are three distinct areas providing flexible space for both private and business events and celebrations. Space includes a restaurant with capacity for up to 100 people and a self-contained glass conservatory on the outside terrace (with retractable roof) with up to 80 covers. The main historic building dates from 1829 when it was built to serve the river trade and it has been a pub/restaurant ever since. Free WiFi is available. Located in the heart of Windsor and behind Windsor & Eton Riverside Station, the station car-park is immediately adjacent to the venue with plenty of additional parking close by. There is disabled access and amenities and drop-off/pick-up areas front and rear of the building.



Meeting and Conference Facilities

| Suite/Capacity | Theatre | Classroom | Dinner | Dinner Dance | Reception | Boardroom |
|--------------------------------------|---------|-----------|--------|--------------|-----------|-----------|
| Restaurant | – | – | 80 | 60 | 100 | – |
| Bar (in conjunction with restaurant) | – | – | – | – | 60 | – |
| Riverside Conservatory | – | – | 80 | – | 70 | 40 |

Venue Details

| | | | |
|------------------|--------------------------|-------------------------------|--------------------------|
| Bedrooms: | – | Airport: | 11 miles |
| Parking: | Windsor & Eton Riverside | Nearest train station: | Windsor & Eton Riverside |

Castle Hotel, Windsor

- MGallery Hotel Collection



18 High Street, Windsor, SL4 1LJ

T: 01753 851 577 | E: H6618-SB@accor.com | W: www.castlehotelwindsor.com

Contact: Emily Dawkins - Sales & Marketing Manager (Emily.Dawkins@accor.com) or Emma Brooks, Sales Office Manager (H6618-SL@accor.com)

Located in the heart of Windsor, the Castle Hotel, Windsor – MGallery Hotel Collection is an elegant Georgian building, situated opposite the Guildhall and the Windsor Castle. It makes the ideal base for exploring the town and nearby area. The hotel offers 10 newly refurbished and fully equipped meeting & banqueting rooms catering up to 400 delegates. Full audio-visual support can be provided and a dedicated conference planner to assist with all aspects of the event planning, theming, entertainment, local tours & team building activities. The 108 bedrooms have been beautifully decorated with a refined take on contemporary design. Complimentary amenities, including luxury toiletries and fluffy bathrobes are provided so that guests can truly relax. Their Marco Pierre White Steakhouse Restaurant Bar & Grill pairs hearty dishes with a wide selection of wines & cocktails. The menu is filled with old British classics, ranging from steak, warming pie dishes & nostalgic desserts.



Meeting and Conference Facilities

| Suite/Capacity | Theatre | U-Shape | Boardroom | Classroom | Banquet | Cabaret |
|--------------------|---------|---------|-----------|-----------|---------|---------|
| Windsor & Georgian | 400 | 60 | 50 | 150 | 300 | 160 |
| Windsor Suite | 240 | 60 | 50 | 96 | 192 | 96 |
| Georgian Suite | 80 | 30 | 24 | 30 | 60 | 40 |
| Sandringham Suite | 80 | 30 | 24 | 30 | 60 | 40 |
| Balmoral Suite | 80 | 30 | 24 | 30 | 60 | 40 |
| Blenheim Suite | - | - | 14 | - | 16 | - |
| Chatsworth | - | - | 12 | - | - | - |
| Holyrood | - | - | 8 | - | - | - |
| Warwick | - | - | 6 | - | - | - |
| Hampton | - | - | 4 | - | - | - |

Venue Details

| | | | |
|------------------|------------------------|-------------------------------|-----------------|
| Bedrooms: | 108 | Airport: | 8 miles |
| Parking: | 108 cars and 1 Coaches | Nearest train station: | Windsor Central |

Cliveden House



Cliveden House, Berkshire, England, SL6 0JF

T: 01628 607107 | W: www.clivedenhouse.co.uk/organise-a-meeting

Contact: special.events@clivedenhouse.co.uk

Just 40 minutes from London, Cliveden is a sublime escape from the city. Featured on Condé Nast Traveller's Gold List 2020, this five-star property sits amongst 376 acres of magnificent Grade 1 listed formal National Trust gardens and woodland. The Cliveden Spa offers a glorious setting in which to relax and unwind, while for those looking to explore, there's the option of a leisurely boat trip along the Thames followed by afternoon tea in the main house. For a special dinner, The Cliveden Dining Room offers a menu of divine dishes, while The Astor Grill is perfect for a relaxed lunch with friends and family.

Professionalism, unbeatable service and attention to detail are the hallmarks of Cliveden as a meeting venue. The finest of luxury conference hotels, Cliveden is not only the perfect location for business meetings and conferences but is also ideally located for entertaining key clients, showcasing new products or simply thanking the team. There are few places more luxurious or enchanting than Cliveden for a private celebration or meal.



Meeting and Conference Facilities

| Suite/Capacity | Theatre | Classroom | Dinner | Cabaret | Reception | Boardroom |
|--------------------|---------|-----------|--------|---------|-----------|-----------|
| French Dining Room | 60 | – | 60 | 50 | 100 | 30 |
| Boudoir | 40 | – | 24 | – | 40 | 14 |
| Waldo's (front) | – | – | – | – | 20 | – |
| Waldo's (back) | 30 | – | 30 | – | 40 | 16 |
| Screening Room | 60 | – | 50 | 30 | – | 20 |
| Cellar Dining Room | – | – | 12 | – | – | 12 |
| Motor House | 50 | – | – | – | – | 26 |
| Churchill | 50 | – | – | – | – | 24 |

Venue Details

| | | | |
|------------------|---------------|-------------------------------|--------|
| Bedrooms: | 47 | Airport: | 16 |
| Parking: | Free - onsite | Nearest train station: | Taplow |

Coworth Park



Blacknest Road, Ascot, Berkshire, SL5 7SE

T: 01344 630539 | E: groupandeventsales.CPA@dorchestercollection.com | W: www.dorchestercollection.com

Contact: Group and events at Coworth Park

Dorchester Collection's luxury country house hotel and spa, Coworth Park, nestled amidst 240 acres of parkland, combines the intimacy of a private country estate with a modern sophistication. With both stunning accommodation and event space this makes it ideally suited to those seeking a memorable landscape for a business meeting or conference. Situated on the edge of Windsor Great Park, just 45 minutes from central London and 20 minutes from Heathrow airport, it's easy to get to but has a real get-away-from-it-all feel. Four flexible event spaces benefit from natural daylight and are ideally suited for private dining. The castle-like charm of the Tower House, with its balcony overlooking the lake, is suitable for up to 30 guests as is the Oak Room. The Oval Room and Garden Room, with exterior terraces, have a dining capacity for up to 100 guests. All the event rooms have state-of-the-art conference technology, on-site AV support and a dedicated events manager.

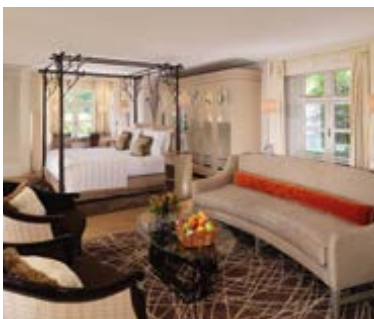


Meeting and Conference Facilities

| Suite/Capacity | Theatre | Classroom | Banquet | Dinner Dance | Reception | Boardroom |
|----------------|---------|-----------|---------|--------------|-----------|-----------|
| The Oak Room | 30 | 12 | 30 | - | 50 | 20 |
| The Oval Room | 100 | 60 | 100 | 70 | 100 | 42 |
| Garden Room | 80 | 60 | 80 | 40 | 100 | 30 |
| Tower House | 30 | 18 | 30 | - | 50 | 18 |

Venue Details

| | | | |
|------------------|---------|-------------------------------|----------|
| Bedrooms: | 70 | Airport: | 14 miles |
| Parking: | 70 cars | Nearest train station: | Ascot |



Cumberland Lodge



The Great Park, Windsor, Berkshire, SL4 2HP

T: 01784 497780 | E: enquiries@cumberlandlodge.ac.uk | W: www.cumberlandlodge.ac.uk

Contact: Matthew Hancock, Sales and Marketing Manager

Cumberland Lodge is an educational foundation and residential conference centre, majestically situated in the heart of Windsor Great Park. Our stunning facilities are available to hire for conferences, meetings, away days, professional development courses and special events such as weddings. These bookings support our charitable work of empowering people, through dialogue and debate, to tackle social divisions and promote progress towards more peaceful, open and inclusive societies. We offer a range of flexible meeting spaces, spread across three historic buildings, including large conference rooms with linked breakout rooms, elegant reception rooms, private meeting spaces and an open-air woodland seminar space. The tranquillity and seclusion of the Great Park, the expansive green space and relaxed atmosphere all help to make Cumberland Lodge a popular place for away days and retreats. There are plenty of quiet areas, inside and out, to reflect and gather your thoughts. Cumberland Lodge is widely noted for its relaxed atmosphere, excellent food, impressive facilities and exceptional quality of service. These qualities and more make Cumberland Lodge a truly distinctive venue, and a memorable setting for all kinds of events.



Meeting and Conference Facilities

| Suite/Capacity | Theatre | Classroom | Dinner | Dinner Dance/Cabaret | Reception | Boardroom |
|-----------------------|---------|-----------|--------|-------------------------|-----------|-----------|
| Filtcroft | 120 | 60 | - | - | - | 48 |
| Sandby | 50 | 24 | - | - | - | 30 |
| Amy Buller Library | 50 | 20 | - | - | - | 25 |
| Greening | 30 | 18 | - | - | - | 24 |
| Hodgson | 30 | 18 | - | - | - | 22 |
| Halifax | 12 | - | - | - | - | 12 |
| Drawing Room | - | - | - | - | 80 | - |
| Sitting Room | - | - | - | - | 20 | - |
| Cumberland Room | - | - | 64 | 52 | - | - |
| Prince Christian Room | - | - | 36 | 100 (88 cabaret) | - | - |
| Princess Helena Room | - | - | 18 | - | - | - |
| Wilderness Marquee | 30 | 20 | - | - | 30 | 20 |

Venue Details

| | | | |
|------------------|-----|-------------------------------|---------|
| Bedrooms: | 58 | Airport: | 8 miles |
| Parking: | 150 | Nearest train station: | Egham |

De Vere Beaumont Estate



Burfield Road, Old Windsor, Berkshire, SL4 2JJ

T: 01753 640 000 | E: beaumontsales@devere.com | W: www.devere.com/de-vere/beaumont-estate

Nestled in Old Windsor, the historic and unique De Vere Beaumont Estate is set in 40 acres of stunning parkland. The hotel is an elaborate mix of old and new, and features over 55 conference, training and event spaces including the stunning Old Chapel, which has recently been fully refurbished and restored to its former glory. The hotel also boasts 429 bedrooms, ranging from standard doubles to executive suites, restaurant, bars, gym, pool and a wide range of outdoor activities.

Located close to the M25, M4 and M3, with Heathrow airport just 15 minutes away by car. The nearest train station is Egham which is a 5 minute drive away. Close to local attractions including Legoland, Windsor Castle and Thorpe Park. Hotel facilities include a full equipped gym, indoor swimming pool, tennis court, football pitch and team-building activities.



Meeting and Conference Facilities

| Suite/Capacity | Theatre | Classroom | Dinner | Dinner Dance | Reception | Boardroom |
|---------------------|---------|-----------|--------|--------------|-----------|-----------|
| Hanover Suite | 700 | – | 550 | 450 | 700 | 80 |
| Balmoral Suite | 180 | 90 | 120 | 120 | 180 | 40 |
| Tudor Suite | 150 | 70 | – | 130 | 150 | 40 |
| The Chapel | 170 | 60 | 200 | 80 | 250 | 50 |
| Kensington Suite | 50 | 32 | – | 48 | 50 | 34 |
| Windsor 2,3,6,7 & 8 | 80 | 24 | – | 30 | 80 | 32 |
| The Remenham | 50 | 20 | 40 | 25 | 50 | 24 |

Venue Details

| | | | |
|------------------|------------------------|-------------------------------|---------|
| Bedrooms: | 429 | Airport: | 7 miles |
| Parking: | 600 cars and 6 Coaches | Nearest train station: | Egham |



Eton College Dorney Lake



Off Court Lane, Dorney, Windsor, Berkshire, SL4 6FJ
 T: 01753 832756 | E: info@dorneylake.co.uk | W: www.dorneylake.co.uk

Contact: Events Team

Conveniently located within 5 minutes from the M4 J7 and only 18 minutes from Heathrow and London; stunningly set alongside the River Thames and surrounded by over 400 acres of scenic parkland, Eton College Dorney Lake is a world class sporting and events venue with inspiring Olympic Heritage.

The Boathouse, with its modern, bright and flexible event spaces every event can be catered for, from the smallest meeting to the larger conferences, corporate events and away days.

Whether you challenge and motivate your team with unique and exciting activities, launch your latest product or simply wish to impress at this world renowned venue, Dorney Lake is the perfect setting to inspire and achieve.



Meeting and Conference Facilities

| Suite/Capacity | Theatre | Cabaret | Boardroom | U Shape with tables | U Shape no tables | Class Room | Lunch/Dinner | Dinner Dance | Reception |
|-----------------|---------|---------|-----------|---------------------|-------------------|------------|--------------|--------------|-----------|
| Lake View Room | 90 | 40 | 30 | 30 | 30 | 16 | 96 | - | 150 |
| River View Room | 150 | 60 | 30 | 30 | 30 | 20 | 140 | - | 150 |
| Combined | 200 | 120 | 30 | - | 30 | 30 | 200 | 180 | 320 |
| London Room | 20 | 16 | 14 | - | 14 | 8 | 14 | - | - |
| Olympic Suite | 26 | 24 | 20 | 20 | 20 | 12 | - | - | - |
| Rio Room | 30 | 20-25 | 14 | - | 16 | 8 | - | - | - |
| Beijing Room | 20 | 20-25 | 14 | - | 14 | 8 | - | - | - |
| Both | 54 | 40 | 22 | - | 22 | 12 | - | - | - |

Venue Details

| | | | |
|------------------|----------|-------------------------------|------------------|
| Bedrooms: | - | Airport: | 18 miles |
| Parking: | 250 cars | Nearest train station: | Taplow or Slough |

Eton College Queen's Eyot



Monkey Island Lane, Bray, Berkshire, SL6 2EA

T: 01753 832756 | E: info@queenseyot.co.uk | W: www.queenseyot.co.uk

Contact: Events Team

Superbly located on the River Thames a few miles upstream from Windsor, and still only 5 minutes from main transport links such as the M4 J 8/9, Eton College Queen's Eyot truly is a hidden gem.

Owned by Eton College since 1923, the Clubhouse offers quintessentially English style set within picturesque and tranquil lawns. Access to the island is by a ferryboat crossing, making your event truly exclusive and unique, transporting and enchanting guests to the peace and tranquillity of this island oasis.

The four acres of gardens are ideal for team building days and fun activities or for just kicking back, relaxing and watching the River Thames drift by. The island and clubhouse will be exclusively yours for the day so come and experience the peace and tranquillity of this island oasis, a breath-taking quintessential English gem on the Thames.



Meeting and Conference Facilities

| Suite/Capacity | Theatre | Cabaret | Boardroom | U Shape with tables | U Shape no tables | Class Room | Lunch/Dinner | Dinner Dance | Reception |
|----------------|---------|---------|-----------|---------------------|-------------------|------------|--------------|--------------|-----------|
| The Clubhouse | 60 | 40 | 20 | 20 | 20 | – | 80 | – | 100 |
| The Marquee | – | – | – | – | – | – | 150 | 150 | 200 |

Venue Details

| | | | |
|------------------|----|-------------------------------|--------------------|
| Bedrooms: | – | Airport: | 20 mins |
| Parking: | 80 | Nearest train station: | Maidenhead, 5 mins |



Fairmont Windsor Park



Bishopsgate Road, Englefield Green, TW20 0YL

T: 020 8757 7404 | E: windsorenquiries@thearoragroup.com | W: fairmont-windsorpark.com

Contact: John Swift, Head of Sales

Set in an oasis of beautifully landscaped gardens, adjacent to Windsor Great Park and Savill Gardens, the new Fairmont Windsor Park boasts over 200 bedrooms which have been meticulously designed with luxury, comfort and tranquility in mind. This 5-star hotel offers 15 elegantly designed meeting rooms where you can stimulate thought, discussion and creativity, mirroring our commitment towards providing an authentic wellness experience throughout the hotel. Fairmont Windsor Park offers an exclusive world-class spa featuring 16 treatment rooms and extensive facilities all of which provide a luxurious retreat. Our picturesque surroundings perfectly set the scene for weddings and special occasions. Enjoy seamless service from our Fairmont team and a stress-free planning process to ensure your big day is truly memorable. Our 800m2 pillar-free ballroom caters for events up to 700 guests, and our outstanding 120 acres of parkland offer flexible outdoor space for activities and events.



Meeting and Conference Facilities

| Suite/Capacity | Theatre | Cabaret | Classroom | Boardroom | U Shape | Banquet |
|---------------------------------|---------|---------|-----------|-----------|---------|---------|
| Meeting Room 1 (Ground Floor) | 200 | 96 | 135 | 38 | 48 | 130 |
| Meeting Room 1+2 (Ground Floor) | 400 | 206 | 300 | 80 | 90 | 270 |
| Meeting Room 1 (Lower Ground) | 100 | 64 | 81 | 38 | 42 | 80 |
| Meeting Room 2 (Lower Ground) | 28 | – | – | 12 | – | 10 |
| Meeting Room 3 (Lower Ground) | 28 | – | – | 12 | – | 10 |
| Meeting Room 4 (Lower Ground) | 71 | 32 | 48 | 14 | 24 | – |
| Meeting Room 5 (Lower Ground) | 40 | – | 18 | 14 | 14 | – |
| Meeting Room 6 (Lower Ground) | 20 | – | – | 12 | – | – |
| Meeting Room 7 (Lower Ground) | – | – | – | 14 | – | – |
| Meeting Room 8 (Lower Ground) | 45 | 16 | 24 | 20 | 24 | – |
| Meeting Room 9 (Lower Ground) | 45 | 16 | 24 | 20 | 22 | – |
| Meeting Room 10 (Lower Ground) | 52 | 32 | 36 | 14 | 24 | – |
| Meeting Room 11 (Lower Ground) | 50 | 16 | 24 | 14 | 18 | – |
| Ballroom 1 (Lower Ground 2) | 330 | 175 | 200 | – | – | 360 |
| Ballroom 1+2 (Lower Ground 2) | 700 | 375 | 450 | – | – | 600 |

Venue Details

| | | | |
|------------------|------|-------------------------------|---------|
| Bedrooms: | 200+ | Airport: | 7 miles |
| Parking: | Yes | Nearest train station: | Egham |

French Brothers Boats



Clewer Boathouse, Clewer Court Road, Windsor, Berkshire, SL4 5JH

T: 01753 851900

E: sales@frenchbrothers.co.uk

W: www.frenchbrothers.co.uk

Contact: Don Yates

French Brothers operate a large fleet of riverboats on the River Thames at Windsor, Runnymede and Maidenhead. These vessels are capable of carrying 12 to 150 people in comfort with on board bar facilities. Riverboats make an ideal conference venue, providing a relaxed atmosphere to stimulate the business mind. The ever-changing scenery helps to inspire the creative process. Combining business with pleasure is a British tradition and the craft of French Brothers can convert easily from a conference suite to a lively party venue. Clients can tailor make a function or benefit from an inclusive party package which includes Casino, Murder Mystery, and Disco Nights. Heated boats are available all year round, making them an ideal venue for your company's Christmas function. Also available are genuine coal fired steam boats, 'Nuneham' and 'Streatley'. These are suitable for discerning clients, as well as TV and Film Companies requiring a touch of authentic realism to period dramas.



Meeting and Conference Facilities

| Suite/Capacity | Theatre | Classroom | Banquet | Dinner Dance | Reception | Boardroom |
|-------------------------|---------|-----------|---------|--------------|-----------|-----------|
| New Queen of the Thames | 68 | 68 | 150 | 68 | 150 | 68 |
| Windsor Monarch | 60 | 60 | 100 | 60 | 100 | 60 |
| Nuneham | 25 | 25 | 55 | 25 | 55 | 25 |
| Streatley | 25 | 25 | 55 | 25 | 55 | 25 |
| Lady Margaret Anne | 50 | 50 | 90 | 50 | 90 | 50 |
| Windsor Sceptre | 50 | 50 | 90 | 50 | 90 | 50 |
| Bray Royale | 40 | 40 | 50 | 40 | 50 | 40 |
| Windsor Majesty | 50 | 50 | 90 | 50 | 90 | 50 |
| Pink Champagne | 40 | 40 | 50 | 40 | 50 | 40 |
| Southern Comfort | 65 | 65 | 149 | 65 | 149 | 65 |

Venue Details

| | | | |
|--------------------------------|---|-----------------|----------|
| Bedrooms: | – | Airport: | 10 miles |
| Parking: | Windsor and Runnymede | | |
| Nearest train stations: | Windsor & Eton Riverside & Windsor and Eton Central | | |

The Great Fosters Estate

- part of the Alexander Hotels Collection



Stroude Road, Egham Surrey TW20 9UR
 T: 01784 433822 | E: gfsales@alexanderhotels.com

The Great Fosters Estate is a fantastic venue for meetings, conferences, team building and more. Its enviable location, less than 15 minutes from London Heathrow or 30 minutes from London Waterloo and near to the M25, M4 and M3 and its flexible contemporary meeting spaces ensure that the estate is the perfect choice for any event. Great Fosters is a Grade I listed building shrouded in Tudor history. Originally the Royal Hunting Lodge of Henry VIII, it is most likely where he courted Anne Boleyn and of course you cannot overlook the personal crest of Queen Elizabeth I above the front of the property too. Today, Great Fosters is a magnificent boutique hotel set in 50 acres of glorious gardens, which include a Saxon moat, lake and grassed amphitheatre.

Self-contained, The Coach House offers unbeatable privacy. The ground floor has three bespoke meeting rooms and conference lounge, which open on to a walled garden where lunch can be served al fresco during the summer. If you are looking for an unusual setting for your next meeting the beautiful 14th century Tithe Barn provides a dramatic setting for any event. With a high vaulted ceiling and exposed beams delegates will definitely be wowed by the unique surroundings. Lunch can be taken in the Painted Hall or Orangery.



Meeting and Conference Facilities

| Suite/Capacity | Boardroom | Private Dining | Cabaret | U-Shape | Theatre |
|----------------|-----------|----------------|---------|---------|---------|
| Tithe Barn | 48 | 180 | 48 | 40 | 120 |
| Orangery | 48 | 80 | 48 | 40 | 120 |
| Mowbray | 20 | 24 | 15 | 20 | 30 |
| Mandeville | 8 | 8 | - | - | - |
| Clarence | 22 | - | - | 22 | 30 |
| Victoria | 16 | - | - | 0 | - |
| Concord | 10 | - | - | 0 | - |
| Tudor Room | - | 20 | - | - | - |

Venue Details

| | | | |
|------------------|-----------------------|-------------------------------|--------------------------|
| Bedrooms: | 55 | Airport: | London Heathrow, 8 miles |
| Parking: | Free on site car park | Nearest train station: | Egham, 1 mile |

Guards Polo Club



Smith's Lawn Windsor Great Park Surrey SL5 7SA (sat nav code)
 T: +44 (0) 1784 434 212 | E: events@guardspoloclub.com

The best place in the world to watch the fast-paced sport of polo is Guards Polo Club, situated in the heart of Windsor Great Park. Founded by HRH Prince Philip, The Duke of Edinburgh, in 1955, Guards Polo Club not only retains its coveted Royal connections but hosts some of the sport's most famous tournaments, including the world-class Cartier Queen's Cup tournament, which celebrates its 60th birthday this summer.

The Club hosts more than 500 games between April and September and accompanying a packed fixtures list is an elegant Clubhouse Restaurant and Bar, overlooking The Queen's Ground, our number one polo field. Managed by Mosimann's, the private dining experts who have justified a global reputation through creating delicious menus that perfectly complement the occasion – be it a Royal Wedding, an Olympic dinner or lunch at Guards Polo Club.

As part of our exciting new partnership with Visit Windsor we are offering the opportunity for non-members to be part of our exciting 2020 season. This may range from an informal lunch with friends on our Clubhouse Terrace to a more structured event for up to 200 people in our Stick Room or main Clubhouse dining room, both locations offering excellent views of the field of play.



Meeting and Conference Facilities

| Suite/Capacity | Theatre | Classroom | Lunch | Dinner Dance | Reception | Boardroom |
|---|---------|-----------|-----------|--------------|-----------|-----------|
| The Royal Box* (overlooking The Queen's Ground) | – | – | up to 30 | – | – | – |
| Terrace | – | – | up to 60 | – | – | – |
| Restaurant | – | – | up to 80 | – | – | – |
| Stick Room | – | – | up to 40 | – | – | – |
| Clubhouse (including Terrace, Stick Room and Restaurant) | – | – | up to 150 | – | – | – |
| Duke's Pavillion (our Royal Box overlooking our number two ground) | – | – | up to 12 | – | – | – |

* Subject to approval

www.guardspoloclub.com

www.mosimann.com

Instagram: [guards_polo_club_official](https://www.instagram.com/guards_polo_club_official)

Instagram: [mosimannguards](https://www.instagram.com/mosimannguards)

Heathrow Windsor Marriott Hotel

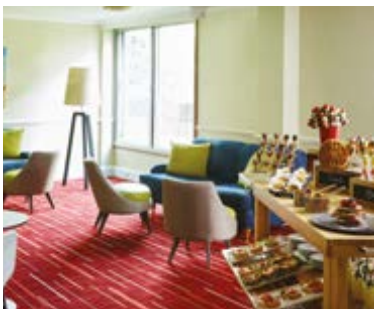


Heathrow Windsor Marriott Hotel, Ditton Road, Langley, Berkshire, SL3 8PT

T: 01753 598181 | E: mhrs.lhrs.l.conferenceandevents@marriotthotels.com | W: www.HeathrowWindsorMarriott.co.uk

Contact: Events Team

Situated just five miles from Heathrow Airport; only 20 minutes from Royal Windsor and close to M4 & M25 motorways. The historic streets of Windsor, filled with unique shops & restaurants, are nearby as are Eton College, LEGOLAND, Racecourses at Ascot & Windsor. Our hotel's three on-site restaurants provide tantalizing dining options and guests also enjoy access to a refreshing indoor pool and expansive Leisure Club. The Buckingham Suite is a large facility that can accommodate up to 320 people for dinner. This highly flexible space is situated on the ground floor and can be divided into three sections. For added flexibility, it has its own breakout area and bar. Outside access makes stage sets – even vehicle delivery – an easy option. The Castle Suite is actually five self-contained rooms in one ground floor location. The Suite has natural daylight with black-out facility, air conditioning, a breakout area and cloakroom, together with the very latest audio-visual technology, making this the perfect environment for training.



Meeting and Conference Facilities

| Suite/Capacity | Theatre | Classroom | Dinner | Dinner Dance | Reception | Boardroom |
|------------------|---------|-----------|--------|--------------|-----------|-----------|
| Buckingham 1 | 100 | 50 | 100 | – | 120 | 42 |
| Buckingham 2 | 100 | 50 | 100 | – | 120 | 42 |
| Buckingham 3 | 100 | 50 | 100 | – | 120 | 42 |
| Buckingham | 300 | 150 | 320 | 300 | 320 | – |
| Warwick Room | 25 | – | 18 | – | 18 | 16 |
| Windsor Room | – | – | 18 | – | 18 | 16 |
| Braemar Suite | 65 | 40 | 40 | – | 40 | 14 |
| Braemar 1 or 2 | 30 | 15 | 30 | – | 30 | 14 |
| Kenilworth Room | 70 | 35 | 70 | – | 80 | 36 |
| Carenarfon Room | 50 | 30 | 30 | – | 30 | 28 |
| Stormont Room | 30 | 18 | 20 | – | 20 | 14 |
| Boardroom 1 to 9 | 10 | – | 10 | – | – | 10 |

Venue Details

| | | | |
|------------------|------------|-------------------------------|---------|
| Bedrooms: | 382 | Airport: | 5 miles |
| Parking: | Chargeable | Nearest train station: | Slough |

Hilton London Heathrow Airport

Terminal 5



Poyle Road, Colnbrook, Berkshire, SL3 0FF

T: 01753 766 521 | E: Heathrowt5.events@hilton.com | W: www.heathrowt5.hilton.com

Contact: David Somner, Senior Mice Manager

The Hilton London Heathrow Airport Terminal 5 surpasses all expectations of an airport hotel – we are Hilton with a Twist. Sitting within 13 acres of landscaped grounds, only 10 minutes from Heathrow Airport and minutes from the M25 and M4 motorway networks, our modern hotel is conveniently located while feeling a world away from the hustle and bustle of Heathrow. The hotel offers 350 deluxe rooms and suites, and a choice of 5 restaurants and bars including our 2 AA Rosette Awarded restaurant Mr Todiwala's kitchen by celebrated chef Cyrus Todiwala OBE. Whether you are hosting an intimate board meeting or large conference, Hilton London Heathrow Airport Terminal 5 offers a superb location, versatile space and 14 meeting rooms with state-of-the-art facilities to suit your requirements. Boasting 16,000 sq ft of impressive and flexible event space, we can accommodate 1,500 delegates or 800 for a sit down dinner. Pippin Woods, our outside space is unique for Heathrow and London, offering capabilities for team-building for up to 300 people. To complement your meeting relax and revive in our stunning Spa with hydrotherapy pool. Hilton London Heathrow Airport Terminal 5 offers creativity at every touch providing everything you need for a successful event. *#creatingmemorablemeetings*



Meeting and Conference Facilities

| Suite/Capacity | Boardroom | U Shape | Theatre | Classroom | Cabaret | Dinner | Dinner/Dance |
|--------------------|-----------|---------|---------|-----------|---------|--------|--------------|
| Gallery Rooms | – | – | 1500 | 430 | 480 | 816 | 696 |
| Gallery Rooms 1-4 | – | – | 816 | 324 | 368 | 612 | 480 |
| Gallery Room 1 | 36 | 48 | 180 | 72 | 80 | 144 | 96 |
| Gallery Room 6 | 30 | 30 | 80 | 36 | 48 | 96 | – |
| Anise Board Room | 18 | – | – | – | – | – | – |
| Cinnamon Boardroom | 17 | – | – | – | – | – | – |
| Jasmine Room | 8 | – | 10 | – | – | – | – |
| Saffron Room | 12 | 14 | 18 | 14 | – | – | – |
| Saffron Suite | 24 | 26 | 42 | 22 | 20 | – | – |
| Tamarind Suite | 30 | 33 | 42 | 24 | 20 | – | – |
| Wasabi Suite | 42 | 44 | 75 | 42 | 30 | – | – |

Venue Details

| | | | |
|------------------|----------|-------------------------------|---------------------------------|
| Bedrooms: | 350 | Airport: | 1 mile |
| Parking: | 500 Cars | Nearest train station: | Wraysbury / Heathrow Terminal 5 |

The Langley



The Langley Buckinghamshire, A Luxury Collection Hotel, Uxbridge Road, Iver SL3 6DU

T: +44 20 7236 3636 | E: info@thelangley.com | W: www.thelangley.com

Contact: Alexandra Bew – Director of Sales & Marketing

The former country estate of the third Duke of Marlborough, The Langley is a luxury hotel and spa set in the heart of the Buckinghamshire countryside. As sister hotel to The Wellesley Knightsbridge, London's finest boutique-grand hotel, it offers the same level of luxury and exclusivity but with its own unique character and setting. The hotel's boutique selection of 41 exquisite rooms and suites are designed by Dennis Irvine Studio with the height of sophistication and refinement in mind. The rooms are divided across the main house and The Brew House, a Grade II listed 18th Century outbuilding. A collection of exclusive dining experiences are also available for the guests at The Langley, including a signature restaurant and an intimate bar specialising in the finest cognac and cigars. Our meeting rooms and private dining spaces make the right impression for client entertaining and corporate events. Floor-to-ceiling windows in the historical Winter Garden offer a luxurious and elegant backdrop for weddings and celebrations. Exclusive hotel hire is also available by special request. The Langley Spa presents an unrivalled 1,600m² backdrop for wellness and indulgence. The inviting setting is complemented by a menu of custom treatments, influenced by the restorative properties of the surrounding Buckinghamshire countryside.



Meeting and Conference Facilities

| Suite/Capacity | Theatre | Classroom | Dinner | Dinner Dance /Cabaret | Reception | Boardroom | Ceremony |
|---------------------|---------|-----------|--------|--------------------------|-----------|-----------|----------|
| Winter Garden | 80 | 45 | 60 | 40 | 100 | 26 | – |
| The Blenheim | – | – | – | – | – | 6 | – |
| The Windsor | – | – | – | – | – | 10 | – |
| The Lake Room | – | – | – | – | 30 | 14 | 25 |
| Cinema | 6 | – | – | – | – | – | – |
| The Iver | – | – | – | – | 20 | 10 | – |
| The Boot Room | – | – | 32 | – | 40 | – | – |
| Teaching Kitchen | – | – | – | – | 10 | – | – |
| Presidential Lounge | – | – | – | – | – | 8 | – |
| Cedar | – | – | 35 | – | – | – | – |
| Drawing Room | – | – | – | – | 50 | – | – |

Venue Details

| | | | |
|------------------|-----------------------|-------------------------------|----------------------------|
| Bedrooms: | 41 | Airport: | 8 miles (Heathrow Airport) |
| Parking: | Ample parking on site | Nearest train station: | Langley (Berks) |

Macdonald Compleat Angler



Marlow Bridge, Marlow, Buckinghamshire SL7 1RG

T: 0844 879 9128 | E: compleatangler@macdonald-hotels.co.uk | W: www.MacdonaldHotels.co.uk/CompleatAngler

Contact: Special Events Team

The renowned Macdonald Compleat Angler is a classic 400 year old English country house located in an idyllic location on the banks of the River Thames. The high quality award winning cuisine sets it apart from many, with organic and farm sourced foods, menus and service standards enjoyed by royals and celebrities alike. The venue regularly hosts gala dinners, hospitality events, boardroom retreats, team building and champagne cruises.

Stylish, luxurious and romantic - the award-winning Macdonald Compleat Angler offers you the perfect accommodation for a magical stay by the riverside. Our luxurious four star en-suite accommodation, next to the cascading waters of Marlow Weir, is the perfect place to stay. The blend of history and contemporary quality is truly reflected in the fresh look experienced by many regular discerning guests.



Meeting and Conference Facilities

| Suite/Capacity | Theatre | Classroom | Dinner | Dinner Dance | Reception | Boardroom |
|-------------------|---------|-----------|--------|--------------|-----------|-----------|
| Balmoral Suite | - | - | - | - | - | 18 |
| Regency Room | 120 | 56 | 120 | 80 | 200 | 42 |
| River Room | 40 | 20 | 48 | - | 60 | 26 |
| Sandringham Suite | - | - | - | - | - | 16 |
| Thames Room | 30 | 16 | 36 | - | 40 | 20 |

Venue Details

| | | | |
|------------------|----------|-------------------------------|----------|
| Bedrooms: | 64 | Airport: | 25 miles |
| Parking: | 100 cars | Nearest train station: | Marlow |



Macdonald Windsor Hotel



23 High Street, Windsor, Berkshire, SL4 1LH

T: 0344 879 9101 | E: specialevents.windsor@macdonald-hotels.co.uk | W: www.MacdonaldHotels.co.uk/Windsor

Located only 20 minutes from Heathrow Airport and less than an hour from London this boutique townhouse hotel offers everything you need for meetings, conferences and events together with the attentive service you and your guests or delegates deserve. With a perfect blend of historical charm and cutting-edge facilities, the stylish meeting rooms at Macdonald Windsor Hotel provide the perfect venue for your next meeting or conference and the regal Windsor town centre location provides an enchanting background for corporate events. The hotel features 120 luxurious bedrooms, many with stunning views of Windsor castle, and offer the perfect haven to relax. Guests can enjoy a cocktail in Caley's lounge and a delicious meal at Caley's Brasserie which serves excellent modern British cuisine. WiFi is free and unlimited throughout the hotel for all guests and extra bandwidth is available for meetings and conferences.



Meeting and Conference Facilities

| Suite/Capacity | Theatre | Classroom | Dinner | Dinner Dance | Reception | Boardroom |
|----------------|---------|-----------|--------|--------------|-----------|-----------|
| Castle Suite | 140 | 65 | 120 | 100 | - | - |
| Castle 1 | 70 | 35 | 60 | - | - | 28 |
| Castle 2 | 60 | 25 | 40 | - | - | 24 |
| St Georges | 70 | 40 | 40 | - | - | 25 |
| Highgrove | - | - | - | - | - | 24 |
| Kensington | - | - | - | - | - | 24 |
| Victoria | - | - | - | - | - | 12 |
| Albert | - | - | - | - | - | 12 |

Venue Details

| | | | |
|------------------|-----|-------------------------------|------------------------|
| Bedrooms: | 120 | Airport: | 10 miles |
| Parking: | 36 | Nearest train station: | Windsor & Eton Central |

Monkey Island Estate



Bray-on-Thames, Bray, Maidenhead, SL6 2EE
 T: 01628 623 400 | E: events@monkeyislandestate.co.uk

Situated on a picturesque private island on the River Thames in the historic village of Bray, Monkey Island Estate reopened in February 2019 after a major renovation by YTL Hotels and the award-winning Champalimaud Design. 41 beautifully-appointed guest rooms and suites reflect a contemporary, English country house feel. Each room is equipped with luxurious amenities, including complimentary Wi-Fi. Moored on the banks of the fish-tail shaped Monkey Island, a unique floating spa will offer a range of exclusive spa treatments. Dining at Monkey Island Estate will always delight. The cuisine is a delectable modern take on British classics, with produce freshly sourced from the gardens and surrounding countryside. The Monkey Island Brasserie is the perfect setting for a long lunch or an exquisite dinner. The Monkey Bar serves delicious light bites from the all-day bar menu, quintessentially English Afternoon Tea and a selection of bespoke cocktails, fine Champagnes and wines from the cellar. Marvel at the monkey inspired, 17th Century frescos which adorn the ceilings of the Grade I listed Monkey Room, whilst a secret staircase leads to an intimate Whisky Snug which provides a perfect finale to a grand evening. Set across seven acres, Monkey Island Estate will provide a memorable location to host the perfect wedding, corporate event or special occasion. Featuring tranquil landscaped gardens, the stately and spacious Ballroom, the graceful River Room and the more intimate Spencer Suite & Boardroom, this remarkable venue will create unforgettable and precious memories of your special event. Accessed only by footbridge, boat or helicopter and surrounded by elegant gardens, Monkey Island Estate is reminiscent of a secluded paradise, yet is only 10 minutes from Windsor, less than an hour's drive from Central London and only 25 minutes by car from Heathrow Airport.



Meeting and Conference Facilities

| Suite/Capacity | Theatre | Classroom | Dinner | Cabaret | Reception | Boardroom |
|----------------------|---------|-----------|--------|---------|-----------|-----------|
| Marlborough Ballroom | 100 | 80 | 130 | 84 | 200 | - |
| The Spencer Suite | - | - | - | - | - | 12 |
| The Boardroom | - | - | - | - | - | 20 |
| The River Room | 80 | 60 | 100 | 60 | 150 | - |

Venue Details

| | | | |
|------------------|---------------------------|-------------------------------|------------|
| Bedrooms: | 41 & 3 Private Residences | Airport: | 17 miles |
| Parking: | 55 | Nearest train station: | Maidenhead |

Norden Farm Centre for the Arts



Altwood Road, Maidenhead SL6 4PF

T: 01628 682555 | E: venuehire@nordenfarm.org | W: www.nordenfarm.org

Contact: Richard Murphy, Events and Operations Manager

A dynamic, accessible venue, incorporating the buildings of the old dairy farm it was built on and featuring award winning architecture. Norden Farm has various spaces and is ideal for corporate events or private receptions offering bespoke catering, technical support, team building practitioners and our friendly service. The Courtyard Theatre is state of the art, ideal for large conferences, product launches, theatre productions, film screenings and concerts. It is equipped with top of the range technical specifications, including a Sony 4K digital projector, full lighting rig and superb acoustics. The Studio Theatre works well for small conferences, team building events, acoustic concerts and theatre productions. It offers flexibility and excellent technical facilities. Both venues are supported by a member of our technical team. The 18th century timber framed Long Barn offers an atmospheric, naturally light and flexible environment. It is perfect for receptions, dining and meetings. For smaller meetings and training courses, the stylish and comfortable space in the Georgian Farmhouse is ideal.

Our Art Gallery is extremely light and flexible. It can be adapted into various settings – from a class or break out space, to an exhibition. It can even provide a diverse meetings space for corporate hires.



Meeting and Conference Facilities

| Suite/Capacity | Theatre | Classroom | Dinner | Dinner Dance | Reception | Boardroom |
|-------------------|---------|-----------|--------|--------------|-----------|-----------|
| Courtyard Theatre | 238 | 100 | 200 | 100 | 240 | – |
| Studio Theatre | 98 | 60 | 98 | 50 | 100 | 86 |
| Long Barn | 67 | 40 | 60 | 40 | 80 | 40 |
| Nordens | 30 | 24 | 30 | – | 40 | 20 |
| Farmhouse Room | 20 | 12 | – | – | – | 16 |
| The Gallery | 28 | 16 | – | – | 30 | 20 |
| Café Bar | – | – | – | – | 200 | – |

Venue Details

| | | | |
|------------------|-------------------|-------------------------------|------------|
| Bedrooms: | – | Airport: | 15 miles |
| Parking: | 80 (free parking) | Nearest train station: | Maidenhead |

The Oakley Court



Windsor Road, Windsor, Berkshire, SL4 5UR

T: +44 (0)1753 609988 | E: Conference@oakleycourt.co.uk | W: www.oakleycourt.co.uk

Contact: The Conference Team - conference@oakleycourt.co.uk

We love business and pleasure – whoever said you couldn't combine the two in beautiful, tranquil surroundings, it certainly wasn't us. At The Oakley Court, location is everything. Situated 40 minutes from the centre of London, 20 minutes from Heathrow Airport, and surrounded by beautiful scenery and extraordinary heritage, you'll discover that a secluded hideaway with all the easy transport links really exists. You'll also find that we're not just your average country house hotel. Our unique style showcases a character that is both quirky and elegant, and delivered with plenty of luxury and indulgence. Served with good food and excellent service, by our dedicated conference butler and his team of experienced staff, in one of our exclusive hire rooms, we will help you to create the right environment for your next board meeting, team away day, strategy retreat, or client event. Whatever you need, however unusual – we'll make sure you get it.



Meeting and Conference Facilities

| Suite/Capacity | Cabaret | Theatre | Classroom | Dinner | Dinner Dance | Reception | Boardroom | UShape |
|--------------------|---------|---------|-----------|--------|--------------|-----------|-----------|--------|
| Windsor Suite | 120 | 200 | 90 | 160 | 140 | 270 | 60 | 72 |
| Gloucester | 56 | 120 | 58 | 80 | 60 | 130 | 38 | 50 |
| Westminster | 64 | 130 | 65 | 90 | 70 | 140 | 44 | 50 |
| Richmond | 20 | 26 | 18 | – | – | – | 18 | – |
| Marlow | – | – | – | – | – | – | 12 | – |
| Kingston | 15 | 15 | – | – | – | – | 14 | 14 |
| Eton | 15 | 22 | 14 | – | – | – | 16 | 16 |
| Henley | – | – | – | – | – | – | 8 | – |
| The Boathouse | – | 40 | 22 | – | – | 40 | 22 | – |
| The Conservatory | – | 30 | 20 | 30 | – | 40 | 18 | – |
| The Oakleaf Lounge | 27 | 40 | 20 | 30 | – | 40 | 20 | – |
| Sitting Room | – | 30 | 18 | 26 | – | 30 | 20 | – |
| Library | – | – | – | 12 | – | 20 | 10 | – |

Venue Details

| | | | |
|------------------|----------|-------------------------------|----------------------------------|
| Bedrooms: | 118 | Airport: | 14 miles |
| Parking: | 200 cars | Nearest train station: | Windsor & Eton Riverside/Central |

The Olde Bell



The Olde Bell, High Street, Hurley nr Maidenhead, Berkshire, SL6 5LX
 T: 01628 825881 | E: events@coachinginn.co.uk | W: www.theoldebell.co.uk

Coaching Inns have always made great meeting points. The Olde Bell has a well-deserved reputation for its warming welcome and convivial atmosphere, meaning it's the best venue for your meeting or event. Located in the royal county of Berkshire and under an hour from London, The Olde Bell offers beautiful surroundings, coupled with some of the most original and flexible events spaces in Berkshire. So why choose The Olde Bell? We offer a unique meeting experience encouraging your employees to think differently away from the standard corporate environment. 6 uniquely styled meeting rooms brimming with character and tradition with exclusive use available. Award winning food and historic bar area. Complimentary WiFi throughout the hotel. 48 individually styled bedrooms sat across five buildings, some with roll top baths and others with beautiful views over our gorgeous gardens. Our gardens and exclusive use Malt House grounds are ideal for outdoor activities and away days.



Meeting and Conference Facilities

| Suite/Capacity | Theatre | Classroom | Dinner | Dinner Dance | Reception | Boardroom |
|--------------------------------|---------|-----------|--------|--------------|-----------|-----------|
| Tithe Barn | 150 | - | 130 | 72 | 180 | 52 |
| Garden Room in the Malt House | 20 | - | 14 | - | 25 | 14 |
| Music Room in the Malt House | 20 | - | 20 | - | 30 | 16 |
| Drawing Room in the Malt House | 70 | - | 60 | 30 | 80 | 30 |
| Library Room in the Malt House | 20 | - | 10 | - | 25 | 10 |
| Oak Room in the Malt House | 50 | - | 33 | 24 | 40 | 24 |

Venue Details

| | | | |
|------------------|---------------|-------------------------------|------------|
| Bedrooms: | 48 | Airport: | 20 miles |
| Parking: | Free - onsite | Nearest train station: | Maidenhead |

The Royal Adelaide Hotel

Windsor



The Royal Adelaide Hotel, 44-46 Kings Road, Windsor SL4 2AG
 T: 01753 208924 | E: events@royaladelaide.com | W: www.royaladelaide.com
 Contact: General Manager – Lorraine Miller

The Royal Adelaide Hotel offers you bright, airy conference rooms with natural light and all that Windsor can offer on our doorstep. Located opposite the Long Walk to Windsor Castle, we have 43 air conditioned bedrooms if you want to continue into the evening with a glass of wine and dinner to toast the day's success. The Kings Suite is an intimate room for up to 20 boardroom style. The Windsor Suite is a spacious room accommodating up to 80 people. This room has been designed with flexible partitions that allow you to arrange them to suit your specific requirements. Whether it's bacon sandwiches on arrival or cream tea at break time, we can design your conference your way. Easy access to Heathrow makes The Royal Adelaide perfect for international meetings. Free wifi and chargeable onsite parking.



Meeting and Conference Facilities

| Suite/Capacity | Theatre | Classroom | Dinner | Dinner Dance | Reception | Boardroom |
|----------------|---------|-----------|--------|--------------|-----------|-----------|
| Kings | 30 | 20 | – | – | 20 | 20 |
| Buckingham* | 100 | 80 | 80 | 80 | 100 | 50 |
| Windsor | 75 | 30 | 75 | 75 | 75 | 40 |
| Sandringham | 30 | 20 | – | – | 20 | 20 |
| Eton | 20 | 12 | – | – | – | 10 |

Venue Details

| | | | |
|------------------|-----------------------------|-------------------------------|------------------------|
| Bedrooms: | 43 | Airport: | 9 miles |
| Parking: | Prebooked only. Chargeable. | Nearest train station: | Windsor & Eton Central |

* Please note that the Buckingham suite is Windsor, Sandringham and Eton combined.

Royal Berkshire



London Road, Sunninghill, Ascot SL5 0PP

T: 01344 929 410 | E: meetings@exclusive.co.uk | W: www.exclusive.co.uk/royal-berkshire/

The Royal Berkshire is a business venue like no other, with a high level of service and an abundance of meeting and breakout rooms. We're able to provide a truly memorable setting to host your event. Whether it's an important meeting, a training event or a conference, our choice of 11 flexible meeting rooms means you can select a style that suits your needs and requirements, offering the very highest level of quality technology. We also have dedicated Ideation and Energy Zones, the perfect breakout spaces to relax and enjoy a mid-meeting snack, with our fruit and pick and mix stations. All conveniently located in Ascot, the Royal Berkshire is surrounded by key transport networks, making it easy for you to reach us, as well as return home swiftly at the end of your visit.



Meeting and Conference Facilities

| Suite/Capacity | Theatre | Classroom | Cabaret | Dinner Dance | Reception | Boardroom |
|-----------------|---------|-----------|---------|--------------|-----------|-----------|
| Berkshire | – | – | 99 | 150 | 200 | – |
| Wentworth | 160 | 54 | 77 | 96 | 120 | 40 |
| Marlborough | 100 | 32 | 40 | 60 | 80 | 35 |
| Library | 40 | 14 | 21 | 30 | 40 | 15 |
| White | 25 | 16 | 8 | – | – | 14 |
| Yellow | 25 | 16 | 8 | – | – | 14 |
| Green | 25 | 16 | 8 | – | – | 14 |
| Blue | – | – | – | – | – | 10 |
| Colonel Horlick | – | – | – | 10 | – | 8 |
| Orchard | 25 | 12 | 12 | 18 | 20 | 14 |
| Red | 100 | 42 | 42 | – | 80 | 30 |
| Windsor | 30 | – | 15 | – | 24 | 8 |
| Aqua Room | 70 | – | 32 | 60 | – | 28 |

Venue Details

| | | | |
|------------------|----------|-------------------------------|----------|
| Bedrooms: | 66 | Airport: | 14 miles |
| Parking: | 150 cars | Nearest train station: | Ascot |

The Royal Windsor



Datchet Road, Windsor, SL4 1QD

T: 01753 865 179 | E: info@theroyalwindsor.co.uk | W: www.theroyalwindsor.co.uk

Steeped in history and boasting the finest Castle views in Windsor, The Royal Windsor is the perfect venue for your event. Blending tradition with style, The Royal Windsor is the oldest licenced premises in the Royal town, giving an historic edge and interest to your event. A large garden to the rear of the venue offers incredible views of Windsor Castle, making it the perfect backdrop for celebration photographs. The garden holds up to 200, and boasts a private bar and barbecue area. The Restaurant and the Private Bar can both be booked exclusively for functions. Full venue hire is available for parties of up to 400. Bespoke packages are created by a personal planner, with top of the range technology, HD screens and sound systems all on site. Anything from ice sculptures to live bands can be provided as extras. Licenced for weddings, The Royal Windsor is also ideal for corporate events and family celebrations as well as commemorations and wakes. Located directly opposite Windsor & Eton Riverside Station, with its direct line into London Waterloo, and just a minute's walk from three large out-of-town car parks, The Royal Windsor is easily accessed from central Windsor as well as the M25 and M4 motorways. Heathrow Airport is just 15 minutes by car. There is Disabled parking directly opposite the venue. Food is cooked fresh on the premises using only the finest ingredients, and all bar staff are trained mixologists. Choose The Royal Windsor for a truly regal celebration.



Meeting and Conference Facilities

| Suite/Capacity | Theatre | Classroom | Dinner | Dinner Dance/Cabaret | Reception | Boardroom |
|------------------------------|---------|-----------|--------|-------------------------|-----------|-----------|
| Restaurant | 30 | 40 | 50 | 90 | 90 | - |
| Sports Bar with HD Projector | 20 | 20 | 35 | 70 | 70 | - |
| Garden | - | - | 90 | 200 | 200 | - |

Venue Details

| | | | |
|------------------|--------|-------------------------------|--------------------------|
| Bedrooms: | - | Airport: | 10 miles |
| Parking: | Nearby | Nearest train station: | Windsor & Eton Riverside |

Royal Windsor Racecourse



Maidenhead Road, Windsor, Berkshire, SL4 5JJ

T: 01753 498 400 | E: events@windsor-racecourse.co.uk | W: www.windsor-racecourse.co.uk

Set in 165 acres of beautiful countryside on its very own island surrounded by the River Thames, Royal Windsor Racecourse makes for a unique venue. Perfect for anything from small scale meetings to large outdoor events, this venue offers 165 acres of outdoor space and 1,000m² of indoor space to make use of. With easy access from London, the racecourse is just one mile from Windsor town centre and twelve miles from Heathrow.

A number of our spaces have a view of the race track for an added unique touch, giving the perfect backdrop for conferences and parties alike. Our friendly team are happy to listen to your ideas and are experienced in hosting: large outdoor events, exhibitions and trade shows; conferences, meetings and corporate team-building days; and parties and celebrations of all types.



Meeting and Conference Facilities

| Suite/Capacity | Theatre | Classroom | Dinner | Dinner Dance | Reception | Boardroom |
|---------------------------------|---------|-----------|--------|--------------|-----------|-----------|
| Double Suite 1 & 2 | 40 | 32 | 50 | 40 | 50 | 26 |
| Individual Suite 3 & 4 | 14 | 6 | 20 | – | – | 14 |
| Double Suite 3 & 4 | 30 | 24 | 40 | – | 50 | 20 |
| Owners & Trainers Lounge | – | – | – | – | 60 | – |
| Individual Suite 7,8 & 11 | 14 | 6 | 20 | – | – | 14 |
| Individual Suite 12 | 14 | 6 | 20 | – | – | 14 |
| 1866 Restaurant | 144 | 72 | 110 | 80 | 110 | – |
| Individual Suite GS 1 & 2 | 60 | 42 | 60 | 32 | 50 | 26 |
| 1866 Suite (Whole Floor) | 280 | 90 | 220 | 180 | 250 | – |
| Individual Suite GS 4,5,6,7 & 8 | 40 | 20 | 30 | – | 40 | 20 |
| Royal Suite (Whole Floor) | 276 | 99 | 190 | 170 | 250 | – |
| Riverbank Marquee | 348 | – | 300 | 220 | 350 | – |

Venue Details

| | | | |
|------------------|-------|-------------------------------|----------------------------------|
| Bedrooms: | – | Airport: | 12 miles |
| Parking: | 4,000 | Nearest train station: | Windsor & Eton Riverside/Central |

The Runnymede on Thames



Windsor Road, Egham, Surrey, TW20 0AG

T: 01784 220 981 | E: sales@therunnymede.co.uk | W: www.runnymedehotel.com

Contact: Chris Norris, Meetings and Events Sales Manager

With a fabulous location on the banks of the River Thames, close to Royal Windsor and near to the M25 and Heathrow, The Runnymede on Thames is easy to reach by river, road, rail, or air! The hotel boasts open spaces, fresh contemporary interiors, two riverside restaurants, 180 guest rooms, an award-winning spa, a buzzy atmosphere and friendly service. With 13 meeting rooms and 10 syndicate rooms; two to 150 delegates can exercise their minds and bodies. There's natural daylight in every room, fully controllable air-conditioning, flexible space, the latest meeting room technology at your fingertips, networking spaces, fantastic formal or informal dining options from banquets to BBQ's, and it's all supported by our hugely experienced meetings and events team. The atmosphere everywhere is very relaxed with plenty of places to chat and chill. We've created it this way because we understand that when delegates relax they work more effectively too.



Meeting and Conference Facilities

| Suite/Capacity | Theatre | Classroom | Dinner | Dinner Dance | Reception | Boardroom |
|-------------------|---------|-----------|--------|--------------|-----------|-----------|
| Grand Union Suite | 350 | 250 | 300 | 250 | 350 | 76 |
| Grand Union 1 | 150 | 80 | 120 | 100 | 150 | 50 |
| Grand Union 1 & 2 | 250 | 150 | 180 | – | 250 | 60 |
| Riverside Suite | 120 | 72 | 110 | 80 | 120 | 50 |
| Riverside 1 & 2 | 70 | 32 | 50 | 40 | 70 | 34 |
| Riverside 3 | 40 | 20 | 40 | – | 70 | 20 |
| Mallard 1 & 2 | 50 | 24 | 36 | – | 50 | 24 |
| Minnow/Willow | – | – | – | – | – | 11 |
| Mayfly 1 | – | – | – | – | – | 16 |
| The Basement | 20 | – | 16 | – | 30 | – |

Venue Details

| | | | |
|------------------|----------|-------------------------------|----------|
| Bedrooms: | 180 | Airport: | 11 miles |
| Parking: | 300 cars | Nearest train station: | Egham |

Sir Christopher Wren Hotel & Spa



Thames Street, Windsor, Berkshire SL4 1PX

T: 01753 202807 | E: wrens@sarova.com | W: www.sirchristopherwren.co.uk

Contact: Karl Wilson, General Manager and Jenny Allan, Sales Manager

The historical Sir Christopher Wren Hotel & Spa sits directly on the River Thames in the centre of Royal Windsor. Featuring luxurious rooms and apartments across several characterful buildings, as well as The Brasserie at Sir Christopher Wren and beautiful riverside terrace. It is the perfect location for meetings, corporate events and celebrations. The 4 star venue features unique character, picturesque location and architecture combined with state-of-the-art facilities. The dedicated business and conference centre offers a range of modern, air-conditioned meeting rooms for up to 65 guests. The Princess Suite in Thames House is ideal for larger conferences, receptions and parties for up to 110 guests, and offers direct access to the riverside terrace. The Sienna Room also in Thames House is perfect for more intimate events with up to 18 guests. Across the road is Windsor Lounge, a brand new meeting and event space featuring high-tech facilities, a private entrance and outdoor courtyard. High speed WiFi is free and available throughout the hotel for guests and delegates. All meeting spaces feature large windows, black out blinds and adjustable lighting. The dedicated events team at Sir Christopher Wren Hotel can help you to add a fun twist to your event with a team-building session or games night. You could arrange dragon boating on the Thames, raft building, laser clay pigeon shooting or a trip to the races at Windsor or Ascot.



Meeting and Conference Facilities

| Suite/Capacity | Theatre | Classroom | Dinner | Dinner Dance | Reception | Boardroom |
|------------------|---------|-----------|--------|--------------|-----------|-----------|
| Princess Suite | 90 | 50 | 100 | 90 | 110 | 45 |
| Sienna Room | 18 | - | 12 | - | - | - |
| Highgrove | - | - | - | - | - | 8 |
| Buckingham 1 | 20 | - | - | - | - | 12 |
| Buckingham 2 | 30 | 8 | - | - | - | 12 |
| Buckingham Suite | 65 | 24 | - | - | - | 26 |
| Sandringham | - | - | - | - | - | 7 |
| Balmoral 1 | 20 | 8 | - | - | - | 12 |
| Balmoral 2 | - | - | - | - | - | 8 |
| Balmoral Suite | 35 | 16 | - | - | - | 24 |
| Windsor Lounge | 60 | 25 | - | - | 60 | 25 |

Venue Details

| | | | |
|------------------|---------|-------------------------------|--------------------------|
| Bedrooms: | 139 | Airport: | 10 miles |
| Parking: | 50 cars | Nearest train station: | Windsor & Eton Riverside |

Stoke Park Country Club

Spa and Hotel



Park Road, Stoke Poges, Buckinghamshire, SL2 4PG

T: 01753 71 71 71 | E: info@stokepark.com | W: www.stokepark.com

For those seeking an incredible venue in which to entertain, then Stoke Park's nine beautiful function rooms are perfect for private and corporate use, all with glorious views across 300 acres of sweeping parkland estate. Each room not only provides a professional, five star atmosphere for board meetings, training seminars and conferences, but has the added benefit of giving these events a breath-taking backdrop. Whether a family gathering, a special party with close friends, a Wedding, a private lunch, a romantic candlelit dinner for two or just some recent good news, if something is worth celebrating then it's worth celebrating in style. Stoke Park hosts a number of corporate events including: golf days, tennis and spa days, day and 24-hour conferences, awards and gala dinners, incentive and team bonding days and Christmas parties. Stoke Park has a team of experienced event co-ordinators always on hand to ensure that your event is a great success and the organisation of it is stress free.



Meeting and Conference Facilities

| Suite/Capacity | Theatre | Classroom | Dinner | Cabaret | Reception | Boardroom |
|-------------------|---------|-----------|--------|---------|-----------|-----------|
| The Repton | 30 | – | 27 | 15 | 30 | 14 |
| The Chalfont | – | – | 18 | – | 20 | 12 |
| The Park Salon | 70 | – | 60 | 40 | 100 | 24 |
| The Polo Lounge | 12 | – | 27 | – | 20 | 14 |
| The Fountain Room | 70 | – | 146 | 40 | 160 | 30 |
| The Wyatt | 25 | – | 27 | – | 25 | 14 |
| The Ballroom | 80 | – | 72 | 48 | 80 | 34 |
| The Buckingham | – | – | 12 | – | 20 | 11 |

Venue Details

| | | | |
|------------------|----------|-------------------------------|---------|
| Bedrooms: | 49 | Airport: | 9 miles |
| Parking: | 400 cars | Nearest train station: | Slough |

Venue Henley Greenlands Hotel



Venue Henley, Greenlands, Henley-on-Thames, Oxon, RG9 3AU

T: 01491 418818 | E: conference@henley.ac.uk | W: www.hospitalityuor.co.uk/venue-henley/

Contact: Conference Office

Set within the 30-acre Henley Business School estate in the beautiful Oxfordshire countryside. This magnificent Grade II Listed Building, once home to the WH Smith family, offers excellent conference, meeting and private event facilities along with 100 bedrooms in the Henley Greenlands hotel. Venue Henley has 11 conference rooms and 40 meeting rooms all with AV and presenting technology, full support can be given from our skilled on-site technical team. Overlooking the River Thames our Heyworth restaurant provides a first-class dining experience and a beautiful location for large private functions along with a variety of intimate rooms perfect for smaller parties. Our delightful terraced area and spacious grounds lend themselves for informal groups and summer events. Situated less than 3 miles from the centre of Henley-on-Thames and 5 miles from the riverside town of Marlow. You can drive to the Royal town of Windsor in around 30-minutes and to the historic University city of Oxford in 45-minutes.



Meeting and Conference Facilities

| Suite/Capacity | Theatre | Cabaret | Dinner | U Shape | Reception | Boardroom |
|------------------------------|---------|---------|--------|---------|-----------|-----------|
| National Grid | 115 | - | - | - | - | - |
| Hambleden | - | 72 | - | 32 | - | 48 |
| Thomas Kempner (TK) | - | 40 | - | 28 | - | 32 |
| Greenlands Trust | - | 72 | - | 32 | - | 48 |
| Institute of Directors (IOD) | - | 32 | - | 28 | - | 30 |
| New Suite 1 | - | 18 | - | 18 | - | 24 |
| New Suite 2 | - | 18 | - | 14 | - | 16 |
| New Suite 3 | - | - | - | 12 | - | 12 |
| River House Rooms 1-14 | - | - | - | - | - | 8 |
| TK Rooms 1-12 | - | - | - | - | - | 8 |
| GTS Rooms 1-6 | - | - | - | - | - | 8 |
| Greenlands Rooms 1-8 | - | - | - | - | - | 8 |

Venue Details

| | | | |
|------------------|-----|-------------------------------|----------|
| Bedrooms: | 100 | Airport: | 24 miles |
| Parking: | 200 | Nearest train station: | Henley |

Willow Room by Bateaux London



Thames Side, Windsor SL4 1QN

T: +44 (0)20 7695 1800 | E: sales@bateauxlondon.com | W: www.bateauxwindsor.com

Set your event in the picturesque décor of Windsor with the exclusive hire of our Willow Room boat.

Embark on-board our intimate, elegant, beautifully crafted river boat and take your guests on a unique experience where the stunning river views and Windsor's green landscape become the backdrop to your meeting, event or reception.

Freshly prepared and seasonal, our menus can be tailor-made to a sit-down dinner or a standing reception. Willow Room is a moving restaurant with great food and drinks at the heart of the experience.

With the best view of Windsor Castle, Willow Room is a perfect venue for your event.



Meeting and Conference Facilities

| Suite/Capacity | Theatre | Classroom | Dinner | Dinner Dance | Reception | Boardroom |
|----------------|---------|-----------|--------|--------------|-----------|-----------|
| Willow Room | – | – | 40 | – | 40 | 30 |

Venue Details

| | | | |
|------------------|---|-------------------------------|--------------------------|
| Bedrooms: | 0 | Airport: | 8 miles |
| Parking: | – | Nearest train station: | Windsor & Eton Riverside |

The Windsor Guildhall



High Street, Windsor, SL4 1LR

T: 01628 796284 | M: 07875 121529 | E: guildhall@rbwm.gov.uk

W: www.windsor.gov.uk/windsor-guildhall | Contact: Gillian Richards, Meeting and Events Executive

Enjoy your own touch of opulence at the Windsor Guildhall; for over 300 years the setting for charm, elegance and glamour in the very heart of Windsor. Whether you are looking for a dining experience, a drinks reception, a networking space or a wedding venue, the magnificent Chamber will provide a fitting sense of moment to your event. Overlooked by our Royal Portraits, each gifted by the sovereign of the day, and under our great brass chandeliers, on permanent loan to us by HM The Queen, you can experience an event space like no other.

We work with the finest of local suppliers, so from your champagne to your chocolate truffles, you can enjoy the very best. Offering both comprehensive packages, as well as bespoke and tailored events, our dedicated team will help design and create your occasion, with simple pricing and a pride in excellence; you can enjoy a truly unforgettable moment at the Windsor Guildhall.



Meeting and Conference Facilities

| Suite/Capacity | Theatre | Classroom | Dinner | Dinner Dance | Reception | Boardroom |
|----------------|---------|-----------|--------|--------------|-----------|-----------|
| The Chamber | 100 | 44 | 80 | - | 100 | 44 |
| Ascot Room | 56 | 16 | 16 | - | 30 | 20 |

Venue Details

| | | | |
|-----------|---|------------------------|------------------------|
| Bedrooms: | - | Airport: | 10 miles |
| Parking: | - | Nearest train station: | Windsor & Eton Central |

60 Minutes
To Escape



Do You Have
What it Takes?

Air Conditioning



Team Building



Celebrations



ESCAPE[®] EXPERIENCE WINDSOR

Immersive, Corporate Entertainment and Team Building

Crown Jewels Heist



Caved In



The Lost Mask
of Tlaloc



Area 51



Room 5
Coming Soon!

Total capacity 36 players per hour

www.escapewindsor.co.uk | 01753 866266





GOLDCREST EVENTS LTD IS AN ESTABLISHED AGENCY, PROVIDING A RANGE OF COMPLIMENTARY EVENT-RELATED SERVICES TO OUR CLIENTS.

Our core service offering is Venue Finding, using our combined experience of more than 80 years, with experts whose backgrounds are in event management, venue finding, hotels, catering, and conference organisers and business travel agencies.

We know what you go through when you need to find a venue... you scratch your brains, come up with a few suitable places, you google the venue for contact details, you eventually get through to someone and they're fully booked! Or you're on 3rd option! And then you realise you forgot to check whether the meeting room has natural daylight and how much was parking again. It's a frustrating task and it's taking up too much of your time, when you could be getting other things done. Well, we've got the solution for you: call us and we'll take the donkey work off your plate. What's more, it's a free service.

We are a team that work with the fun factor and at the same time offer an excellent job on getting great rates for our clients. Some of our clients have trusted us to book their meetings for 10 years, some even longer! It's all about trust and reputation: you'll realise the difference we can make after the first booking.

Come join the Fun Team!



Goldcrest Events Ltd and Zest ME...

The perfect partnership for your next Corporate Event



Working throughout the UK with some of the UK's best known household names, Zest ME is the only activity and corporate entertainment agency you need in your little black book of contacts!

Whether you are looking to motivate, celebrate, educate or reward your attendees, Zest ME is sure to create a memorable and highly engaging event experience for all your delegates.

WE CAN ASSIST WITH:

- Team building (indoor and outdoor)
- Conference Energisers and Icebreakers
- Themed Events
- Interactive Evening Entertainment
- Awards and Recognition Events
- Audio Visual and Production Assistance



ABIGAIL ROSS – FOUNDER & DIRECTOR
GOLDCREST EVENTS LTD
 T: +44 (0) 7842 510 524 E: ABI@GOLDCRESTEVENTS.CO.UK

JOHN MCILROY – DIRECTOR
ZEST MEETINGS & EVENTS LTD
 T: 0161 804 2051 OR 0757 257 9292 E: JOHN@ZESTME.CO.UK

REF NO: GCEBWM20

Let our experience make your experience

Conferences
Award Events
Corporate Dinners
Team Building
Activity Days
Roadshows
Venue Finding

Ice is an award winning Brand Experience Agency. We take care of everything from finding the venue, designing the theme and environment, looking after your audience and taking care of all things technical. *Be part of the experience, get in touch, we'd love to hear from you.*

ice **ice**
The Brand Experience Agency

Ice №8 High Street Windsor Berkshire SL4 1LD • 01753 31 49 49 • ice-experience.co.uk

POLO PASSION AND PAGEANTRY

The world's most famous polo club offers exclusive private dining and bespoke opportunities in a spectacular Royal setting in Windsor Great Park. Guards Polo Club, in association with Mosimann's at Guards, can deliver tantalising menus to create outstanding occasions.

- Clubhouse Restaurant
- Royal Box Hire
- Learn To Play Polo Opportunities
- World-Class Polo from April – September

To discuss your requirements or view our facilities at Windsor Great Park please call +44 (0) 1784 434212 or email events@guardspoloclub.com



PROFESSIONAL BLUE BADGE GUIDES IN WINDSOR

- Town walks for clubs and associations
- Corporate and conference town walks
- Personalised tours for friends and family
- Tours of Windsor Castle
- Ghost walks

Web: www.windsortouristguides.co.uk

Tel: +44(0) 1753 850580

Mob: +44(0) 7799 891578



Private Boat Hire



If you would like a superb cruise on the River Thames then this could be just the site you are looking for! Whether for a special occasion, business or simply pleasure then look no further, a trip on one of our luxury boats is for you. We run a fleet of five luxury river cruisers based in various locations on the Thames including Windsor, Maidenhead, Bray and Marlow.

NOW AVAILABLE We are now able to offer a private mooring for visitors to Bray Village, The Fat Duck, Hinds Head, The Crown and Bray Cottages. We also operate boat trips directly to The Waterside Inn for those with a reservation.

To discuss your requirements call Steve Harris on 07977 448 117 or email: fringilla@hotmail.co.uk
www.privateboathire.co.uk

ARRIVE READY FOR BUSINESS



With more seats, free Wi-Fi and power at every seat, travel time needn't be wasted time.

Book your business trip with your local **TMC** or at **GWR.com**

GWR | Great
Western
Railway

Getting Here & Getting Around

The Royal Borough of Windsor & Maidenhead is just 30 miles west of London with Heathrow Airport even closer, just 15 minutes away. Luton and Gatwick Airports are within an hour's drive. The whole of the Royal Borough is easily accessible via the major motorway networks of the M3, M4, M25 and M40 and is well served by public transport.

Arriving by Air

WINDSOR

The Royal Borough is just 12 miles from London Heathrow Airport and easily accessible from London's other airports making it a perfect first or final stop on a tour of the UK. On arrival in Windsor, why not visit the Royal Windsor Information Centre? Our friendly and knowledgeable staff are waiting to help visitors with enquiries about Windsor and the Royal Borough and can help with finding accommodation, tickets for attractions, etc.

HEATHROW AIRPORT www.heathrowairport.com

- Bus routes 8, 9, 10 and 703 operate up to every 30 minutes, providing direct services between Windsor town centre and Heathrow Terminal 5. Journey time are approximately 40 minutes to 1 hour. Connections from Slough to Heathrow Terminal 5 are more frequent with buses every 15 minutes during the day and every half hour overnight.
- All services use modern, air conditioned buses with space for luggage. They operate seven days a week from early until late.
- There are free shuttle bus transfers between all terminals at Heathrow Airport.
- To plan your bus journey, visit www.travelinesoutheast.org.uk



GATWICK AIRPORT www.gatwickairport.com

- From Gatwick Airport take the train to Clapham Junction and then take the train to Windsor and Eton Riverside. Journey time is typically 1 hr 23 mins.
- To plan your rail journey and purchase tickets, visit www.nationalrail.co.uk



Arriving by Train

WINDSOR

- Windsor is served by two train stations, Windsor and Eton Central and Windsor and Eton Riverside. Both are situated within a few minutes' walk of Windsor Castle and the town's other attractions.
- Great Western Railway operates services between London Paddington, Reading and Oxford, as well as destinations across South Wales and the West of England. Change trains at Slough to catch the branch line service to Windsor and Eton Central. The journey from London takes between 24 - 48 minutes depending on stopping patterns and connections.
- South Western Railway operates direct services from London Waterloo to Windsor and Eton Riverside station. The journey time from London is typically 56- 58 minutes
- Visit the operators' websites for details of current offers such as combined rail and shuttle bus tickets, or 2 for 1 entry to local visitor attractions when travelling by rail: www.gwr.com www.southwesternrailway.com

MAIDENHEAD

- Maidenhead is served by trains travelling between London Paddington, Reading and Oxford, which are operated by First Great Western. The journey time from London takes between 20 - 50 minutes depending on stopping patterns.
- Maidenhead town centre is a short walk from the station, while the River Thames is just over a mile away.
- Change trains at Maidenhead for branch line services to Cookham, Bourne End and Marlow.
- Visit the operator's website for details of current offers such as 2 for 1 entry to local visitor attractions when travelling by rail: www.gwr.com

ASCOT

- Ascot Station lies on the junction between the London Waterloo to Reading line and the branch line to Guildford, which are operated by South Western Railway. The journey time from London Waterloo is just over 50 minutes. Ascot Racecourse is within walking distance of the station - extra trains are laid on for the Royal Ascot meeting.
- Ascot trains call at Sunningdale, which is a short walk from Sunningdale Golf Course.
- Visit the operator's website for details of current offers such as 2 for 1 entry to local visitor attractions when travelling by rail: www.southwesternrailway.com

RAIL INFORMATION

For timetables, journey planner, fares and live information for all rail services, visit www.nationalrail.co.uk

Arriving by Bus & Coach

EXPRESS COACH SERVICES

- The Green Line 702 service provides an hourly bus service from London Victoria Coach Station to Windsor and LEGOLAND, with stops at Hyde Park Corner, Royal Albert Hall, Kensington High Street and Hammersmith.
- Green Line also operates the 703 service from Heathrow Terminal 5 to Windsor, LEGOLAND and Bracknell.
- For timetables and route maps, visit www.travelinesoutheast.org.uk.

Arriving by Car

M4 Exit Junction 6 for Windsor or junction 8/9 for Maidenhead

M3 Exit junction 3 (Bagshot)

M25 Exit junction 13 (Egham)

M40 Exit junction 4 (Marlow) or junction 2 (Beaconsfield)

Wheelchair & Disabled Access

HACKNEY CARRIAGES

A number of taxis have been adapted to meet the needs of disabled people and wheelchair users. Please call the following telephone numbers to book their services:

- Windsor (01753 862020)
- Ascot (01344 874237)
- Maidenhead (01628 634311)



Parking

WINDSOR

Visitors are advised to use one of the long-stay car parks in Windsor, including:

- Romney Lock and King Edward VII Car Parks on Datchet Road
- Alma Road and Alexandra Gardens, next to the Coach Park.

These car parks are all less than 10 minutes' walk to Windsor Castle and the town centre and are much cheaper than the short-stay car parks in the middle of town.

Variable message signs on roads around the town show live information on which car parks have spaces. For details of Windsor car park locations and charges, visit www.bwm.gov.uk.

MAIDENHEAD

The car parks in Maidenhead are all very central to shops and restaurants in the town.

You'll also find parking at Maidenhead riverside close to Boulters Lock. Variable message signs on roads around the town provide live information on which car parks have spaces.

For details of Maidenhead car park locations and charges, visit www.bwm.gov.uk.

PARK AND RIDE

Park and ride operates from Home Park and King Edward VII car parks on Datchet Road, Windsor. A free shuttle bus runs from the car parks to Windsor Guildhall every 20 minutes between 7am and 9pm, from Monday to Friday. The Home Park car park is not available at weekends due to the park being used for sporting events.

Parking for Disabled Visitors

ON-STREET PARKING

Blue Badge holders can park in shared use bays (resident and pay and display), on-street pay and display areas and limited waiting areas for the maximum time as displayed on the signage present. There is a maximum stay of three hours in any on-street disabled parking bay. Blue Badge holders are not permitted to park in resident only bays, taxi bays, bus stops, loading bays/zones and clearways.

OFF-STREET CAR PARKS

Blue Badge holders can park free of charge in any borough car park when displaying a valid Blue Badge. Please adhere to the maximum stated time for each car park as outlined on the tariff board and ensure your vehicle is parked within the bay markings.

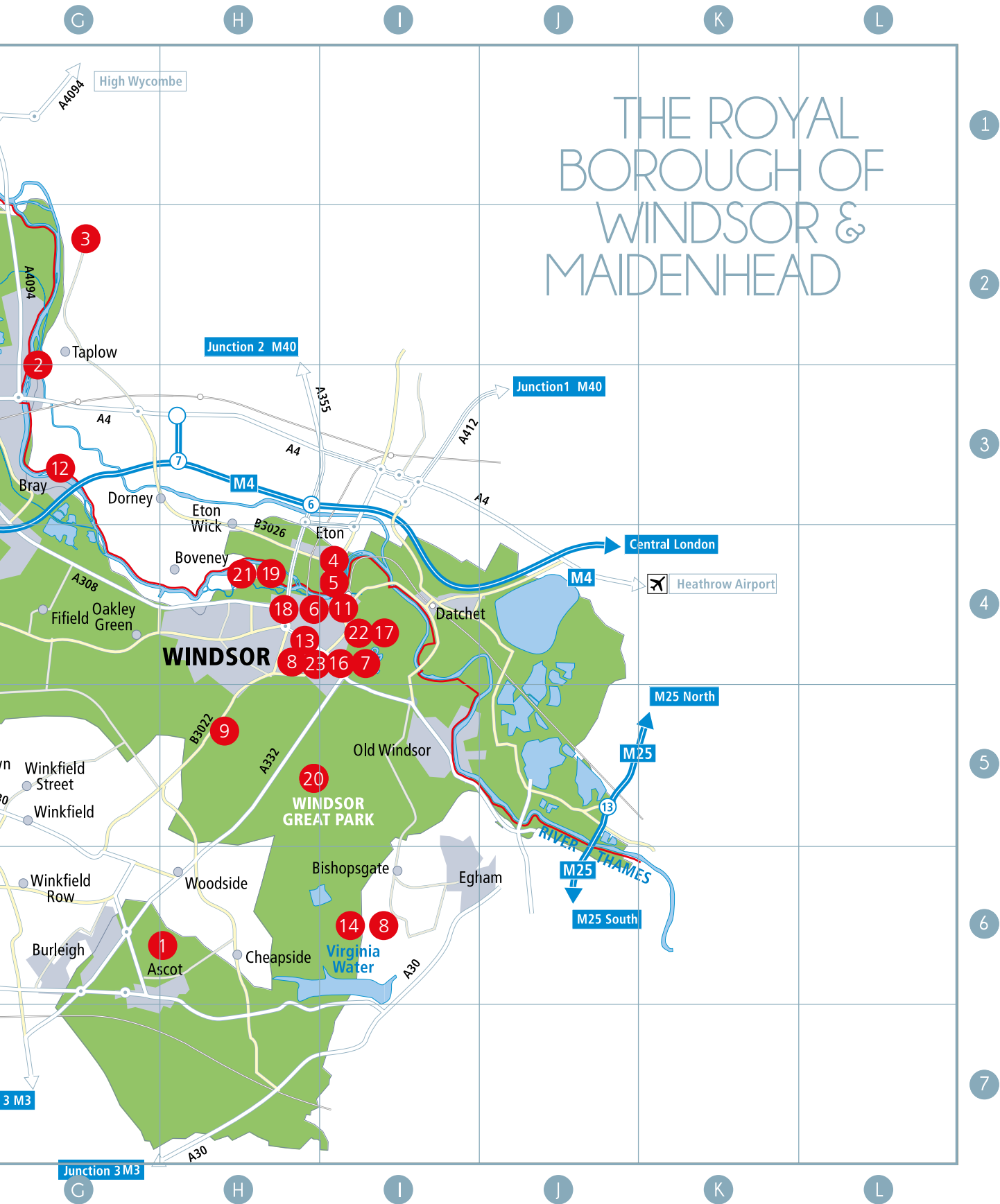
SOME KEY PLACES OF INTEREST:

- 1
- 2
- 3
- 4
- 5
- 6
- 7

1. ASCOT RACECOURSE
2. BOULTER'S LOCK
3. CLIVEDEN, NATIONAL TRUST GARDENS
4. ETON COLLEGE
5. THE ETON WALKWAY
6. FRENCH BROTHERS BOATS
7. HORSE-DRAWN CARRIAGES
8. INFORMATION CENTRE
9. LEGOLAND® WINDSOR
10. MAIDENHEAD HERITAGE CENTRE
11. THE ORIGINAL TOUR
12. PRIVATE BOAT HIRE LTD
13. THE QUEEN'S WALKWAY
14. THE SAVILL GARDEN
15. STANLEY SPENCER GALLERY
16. WINDSOR CASTLE AND FROGMORE HOUSE
17. WINDSOR DUCK TOURS
18. WINDSOR ESCAPE EXPERIENCE
19. WINDSOR & ETON BREWERY
20. WINDSOR GREAT PARK
21. WINDSOR RACECOURSE
22. WINDSOR & ROYAL BOROUGH MUSEUM
23. WINDSOR SHOPPING



THE ROYAL BOROUGH OF WINDSOR & MAIDENHEAD





WINDSOR CASTLE

Private Evening Tours

Private Guided Tours offer groups the opportunity to experience the splendour of Windsor Castle's State Apartments when they are usually closed to the public.

Groups, accompanied by an expert guide, will learn about the Castle's rich history and enjoy a private view of some of the most impressive items in the Royal Collection, including Henry VIII's armour and paintings by Holbein, Rubens and Van Dyck. Your tour finishes with a glass of champagne and includes a souvenir guidebook.



E-mail enquiries:
specialistsales@rct.uk

www.rct.uk   
0303 123 7322



Our tours are much more than a carriage ride

Photo: www.carysannphotography.com

We bring a unique perspective to The Great Park experience, sharing knowledge and stories of Royal tradition passed down through the centuries since our original license was granted in 1849.

Our tours offer a truly unique experience of this magnificent Royal estate. During the ride we share the history of the Great Park and our generations of horses and carriages, while you take in the stunning views of Windsor Castle. Meet the resident deer and encounter historical monuments, ancient forests and stunning horticultural displays.

Let us help plan your perfect experience and discover the peace and tranquillity of the Great Park and The Long Walk on one of our Carriage Tours.

Book a Great Park Experience today at

www.windsorcarriages.co.uk
+ 44 (0)1344 538493

 /windsorcarriages  @windsorcarriages_



EVENTS AT



OUTSTANDING OCCASIONS, BORN OF OUR HERITAGE



Welcome to a truly iconic venue - the home of Royal Ascot
- with a legacy of excellence built and strengthened over
the course of more than three centuries.

Every year Ascot delights over 600,000 racegoers with 26 days of racing,
entertainment and Fine Dining. Yet that's not the whole story, as year-round
we also create hundreds of memorable, bespoke events characterised by that
same sense of occasion, attention to detail and exemplary service... a strong
track record if you like!

To discuss requirements or arrange a tour please
call 0344 346 3611 or email events@ascot.co.uk

